



CEDAR PARK

Vision Plan
2020



FACILITATED AND PREPARED BY PARK PRIDE

ACKNOWLEDGEMENTS



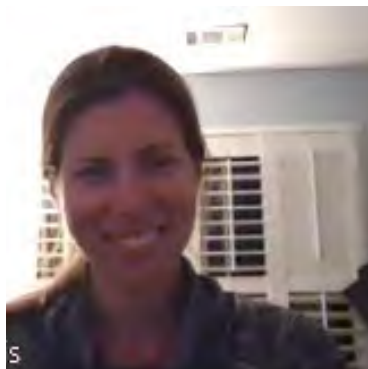
The Cedar Park Visioning Steering Committee:

Row 1, L to R: Wayne Pawley, Andrew White, Robin Flieg

Row 2, L to R: Teri Nye, Lynn Click, Mary-Kate Starkel

Row 3, L to R: Michelle Allerdice, Melissa Antoine, James Alec Gelin

Row 4, L to R: Stephanie Gumbis, Charles Flemming



Typically, this section of a Vision Plan expresses our gratitude for the people who made the process possible. This one will too, but it is impossible to write without acknowledging what was happening as this work was completed. What a year it was.

The parks that forged through the Visioning process in 2020 did so in the midst of a worldwide pandemic caused by a novel coronavirus known as COVID-19. This ongoing public health crisis changed lives forever and changed the *desire* for parks into

Acknowledgements

the *critical need* for parks. Parks have become the glorious open-air greenspaces into which we can escape the social isolation mandated by this disease. They allow us to see and interact with other beautiful human beings, at the prescribed safe distance of six or more feet. They allow us to frolic with our dogs, play with our children, look up at endless blue skies, and breathe beneath a leafy tree canopy and three layers of filtration fabric. Parks offer these experiences in person, no devices or apps necessary.

Along with a public health crisis, 2020 brought into sharp focus the racial and economic inequities that remain pervasive. Our abilities with technology were fast-tracked from optional to essential. In-person meetings were banned; gatherings of more than 10 people in parks prohibited; schools, recreation centers and libraries closed; and masks mandated. The Visioning process, for the first time, happened entirely online via digital technology that many of us had scarcely heard of one year prior.

Without knowing how long these conditions would last, communities like Scottsdale and the neighbors that surround Cedar Park were optimistic. They wouldn't let these challenges divert their intentions for a revitalized park. From the community, a small but determined

group was assembled by James Alec Gelin and Melissa Antoine to serve as the Visioning Steering Committee.

James and Melissa, along with Michelle Allerdice, Lynn Click, Charles Flemming, Stephanie Gumbis, Mary-Kate Starkel, and Wayne Pawley, met virtually and shared the responsibilities of capturing their community's wants and needs for Cedar Park. Each took their role as community representative to heart and hit the streets to distribute paper surveys to every home within a 10-minute walk of the park. Michelle hosted the survey dropbox on her front porch, even after the dropbox's yard sign was appropriated as a motorbike windscreen. Each did their part to post yard signs announcing meetings, proofread text, review design ideas, and make sure the park fulfilled the community's needs. The ideas and ideals were plentiful and diverse, but one thing we discovered is that surveys, regardless of civic intent, cannot be attached to mailboxes.

We also want to thank DeKalb County's Department of Recreation, Parks and Cultural Affairs (DRPCA) for the guidance provided by Vineet Nagarkar, Project Manager. Special thanks as well to Robin Flieg, Constituent Services Representative from Commission District 4 (Bradshaw). Both "Vinnie" and Robin reliably attended steering committee and public meetings throughout the process.

The activities our parks can offer are still in flux but the necessity of greenspaces for all is not. We look forward to seeing this vision of Cedar Park become a reality.

Andrew White, Director Park Visioning
Teri Nye, Project Manager
Torey Garrett, Park Visioning Intern
Ruth Pimentel, Project Manager



A sign of the times. Basketball goals were removed during the pandemic of 2020 to prevent transmission of the COVID-19 virus.

Contents

Acknowledgements	ii
Executive Summary	3
Context & History	7
Existing Conditions	13
Community Engagement	21
Preliminary Plan – Concept 1	30
Preliminary Plan – Concept 2	31
Vision Plan	insert and 33
Projects & Budget	41
Appendices	
Appendix A, Community survey data	47
Appendix B, Live-polling data	81
Appendix C, Preliminary plan data	89
Appendix D, Priorities data	101
Appendix E, 1981 As-built plans	105





In spring 2020, Cedar Park was awarded a Park Visioning grant from Park Pride. Cedar Park is a 3.76-acre park near the center of the Scottdale community in unincorporated DeKalb County, Georgia. The six-month visioning process began in June 2020 and was completed in December 2020. The effort was led by a Steering Committee of eight community members and facilitated by Park Pride. The process was completed via the following key steps.

Executive Summary

1 Ask the Community

The Visioning team studied the existing conditions of the park and its context via a thorough **site analysis**, a review of historical records, and informal interviews.

An online **survey** was used to document the community's needs and desires for the park. In addition, paper versions of the survey were distributed to 450 households within a 10-minute walk of the park.

To provide a central location for information, community input, announcements, survey results, and the public review of concepts and plans, Park Pride designed a **website** to support the park visioning process.

2 Establish Guiding Principles

During the first public meeting, participants engaged in live poll questions to determine their primary concerns and goals for the park. All public meetings were held virtually and live-streamed on the park's website. Based on this feedback plus survey data, the Steering Committee established **Guiding Principles** for the park's future.

Park Name: Cedar Park

Acreage: 3.76

Year acquired: 1977

Address: 3165 Cedar St, Scottdale, Georgia 30079

Parcel number(s):
18 010 03 013 and 18 010 12 017

Property Owner:
DeKalb County Department of Recreation, Parks & Cultural Affairs

Commissioner District: 4 (Bradshaw)
Commissioner Super District: 6 (Terry)

Ecological feature: Indian Creek

3 Review and Feedback of Draft Concepts

Three virtual **public meetings** were held, in September, October, and November 2020. The first meeting established the Guiding Principles. The second meeting offered two preliminary design concepts for review and comment. Polling questions during the meetings were used to encourage participation and feedback.

After each virtual meeting, ideas and/or plans were displayed on the website for a two-week **public comment** period.

4 Agree on a Final Vision Plan

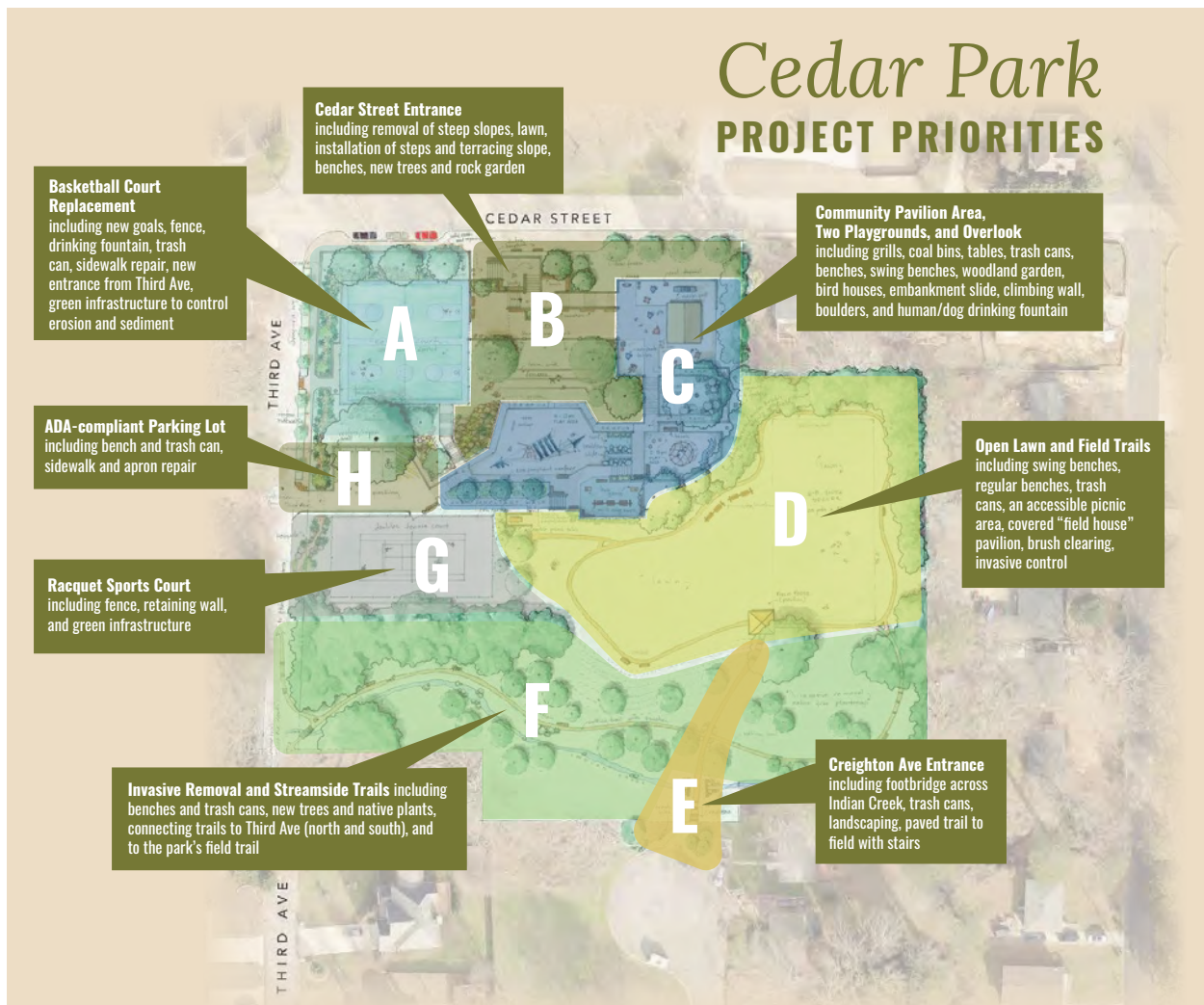
Based on survey feedback and poll results, the preferred elements from each preliminary concept were incorporated into a **final plan**. This plan was then cross-checked with the Guiding Principles and reviewed by the community via a third public meeting and online survey. This document is available online at <https://parkpride.org/we-can-help/park-visioning/> and will also be archived at the Atlanta History Center.

2020 Vision Plan Key Features, Priorities, and Cost Estimates

Cedar Park’s Vision Plan emphasizes the following key features, listed in order of priority as determined by community polling following the final public meeting, November 19, 2020.

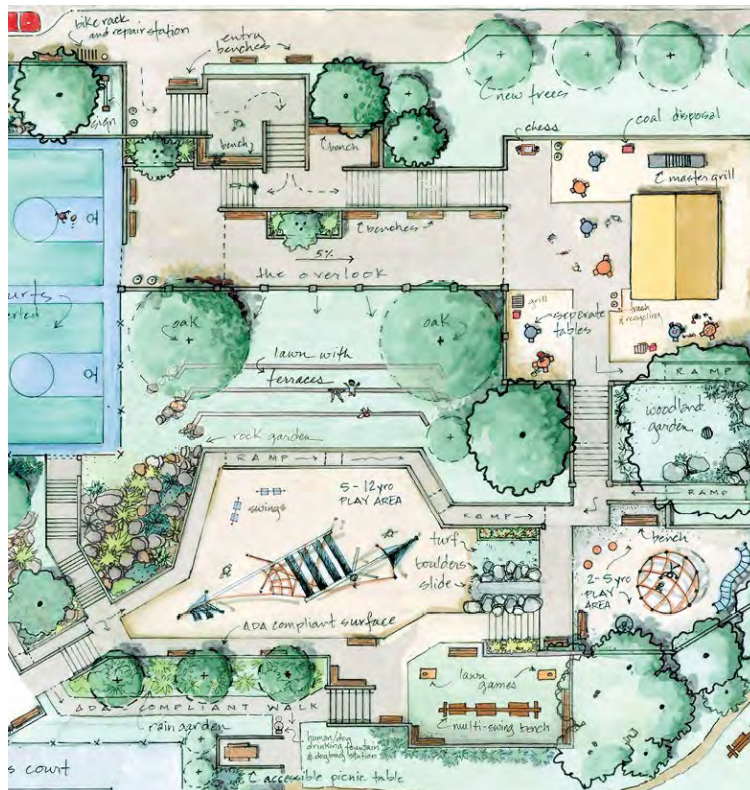
*Costs are based on 2020 pricing and are for guidance only, all projects are subject to DRPCA bidding process

Feature by Priority	Estimated cost (2020)*
C. Relocated and upgraded community pavilion and playgrounds	\$989,361
F. Invasive plant control and streamside trails	\$68,391
B. New Cedar Street entrance	\$476,753
D. Open lawn, field trails, and field house	\$117,349
A. Basketball court replacement	\$84,375
E. New Creighton Avenue entrance	\$45,414
G. New racquet sports court	\$164,700
H. ADA-compliant parking lot	\$95,108
Total Investment	\$2,041,450





EXECUTIVE SUMMARY



Guiding Principles

Provide a welcoming and safe space for all members of the community

Prioritize accessible entrances, circulation, and pedestrian connectivity to the park

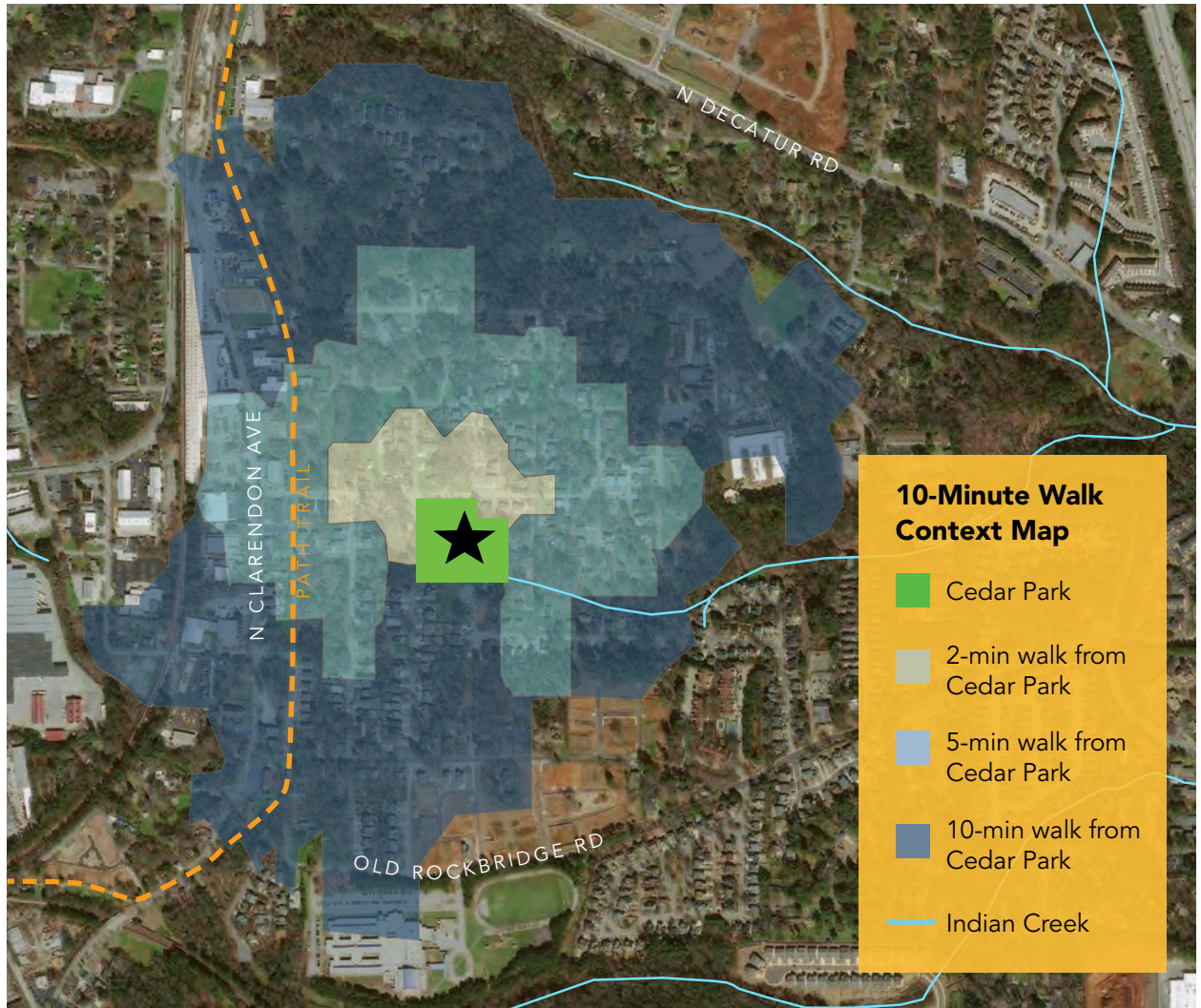
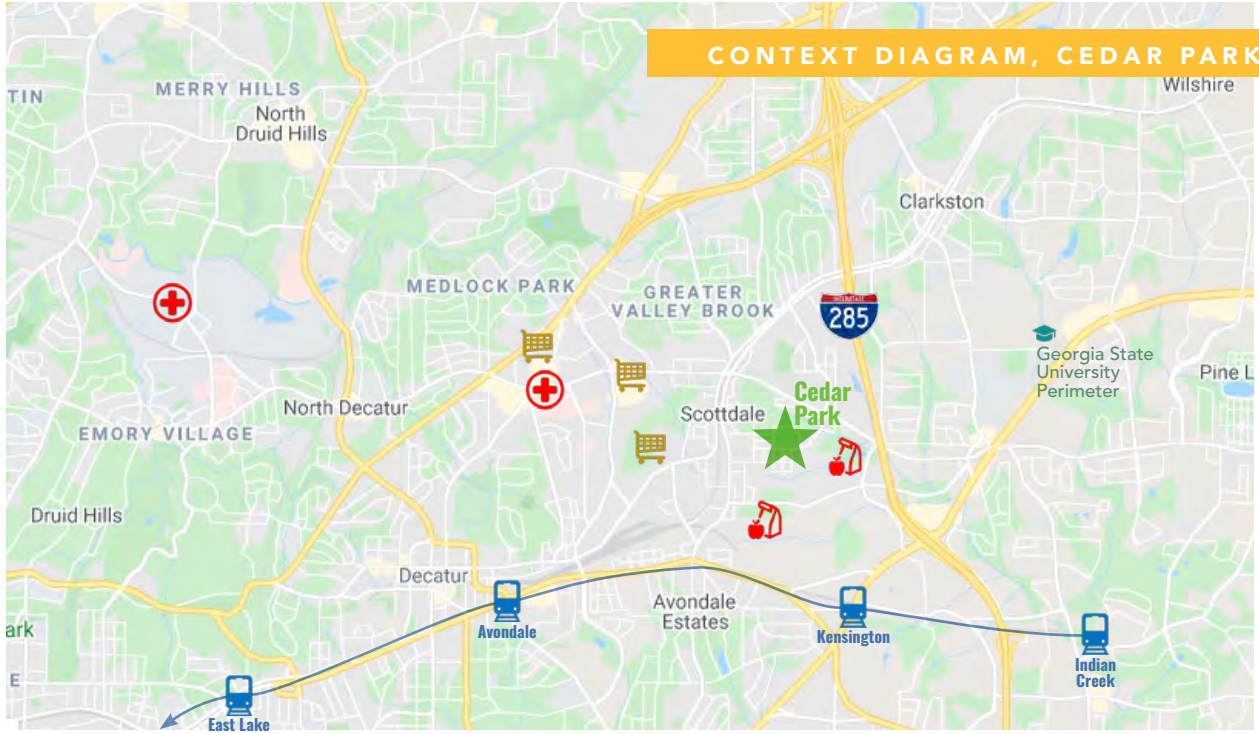
Offer a balance of active uses and spaces that encourage community gathering and enjoyment of nature

Promote maintenance practices and community involvement that will enhance natural ecosystems, control invasive plants, and maximize usable park space

Create a forum to support ongoing community input and provide park-related information, events, and local history

Top image: Final 2020 Vision Plan for Cedar Park
 Above: Detail of active recreation and community areas

CONTEXT DIAGRAM, CEDAR PARK



Context & History

Context

Cedar Park is bounded by Cedar Street to the north, Third Avenue to the west, and residential properties on all sides. Indian Creek and its flood plain separate the developed areas of the park from residents south of the park. Neither Third Avenue or Creighton Avenue cross Indian Creek. Steep slopes and overgrowth prevent access to and from the park at Creighton Avenue and there is no access from Third Avenue south of Indian Creek. The park property slopes dramatically from Cedar Street (elevation 1028 feet) down to Indian Creek (elevation 976 feet) then back up to Creighton Avenue (elevation 990) over a horizontal distance of approximately 554 feet (see diagram on page 13).

Schools around Cedar Park include Robert Shaw Theme School, Avondale Elementary School, Druid Hills Middle School, Druid Hills High School, the DeKalb School for the Arts, and Georgia State University – Clarkston campus.

Two blocks west of Cedar Park, the Stone Mountain Trail segment of the PATH regional trail system passes through Scottdale. This popular bike and pedestrian trail has greatly increased the desirability of homes along its route. The neighborhood also has convenient public transportation access to the MARTA rail stop at Avondale. The number 8 bus, which stops in front of Cedar Park, travels directly to the Avondale station. There is also nearby access to I-285, Atlanta's perimeter highway.

For many years the area around the park featured modest homes surrounded by steel and textile industries, and light industrial

operations. Former industrial sites are now being redeveloped as housing, including large single-family homes and multi-family complexes. The community around Cedar Park recognized that the population increases and land use changes would bring an increased need for and demand on park amenities.

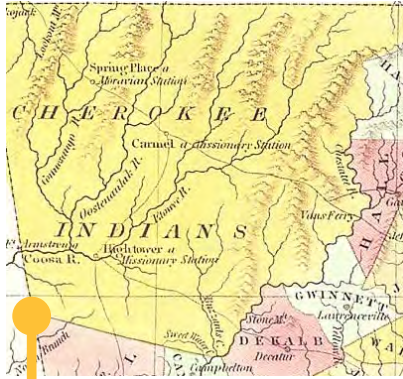
A timeline of the area's 20th-century history appears on the following pages.

History

The land that is now Scottdale was formerly home to Creek and Cherokee Native American nations prior to European settlement. The well-placed trails created by the earliest inhabitants were used as trade routes between communities and later, also used by European immigrants, eventually becoming stage coach roads, and now highways and railroads. In the Piedmont of Georgia, several trails met at Stone Mountain. What later became the Georgia Railroad, around which Scottdale formed, was originally the Sandtown Trail. The name is a direct translation of the Creek Oktahasasi name.

In the early 20th century, Scottdale began a rapid phase of development. George W. Scott established Scottdale Mills at a time when rural Georgia was peppered with industrial mill operations. It was common practice to construct worker housing in adjacent "mill villages" to accommodate the workforce.

Lands of the Cherokee Nation in 1830

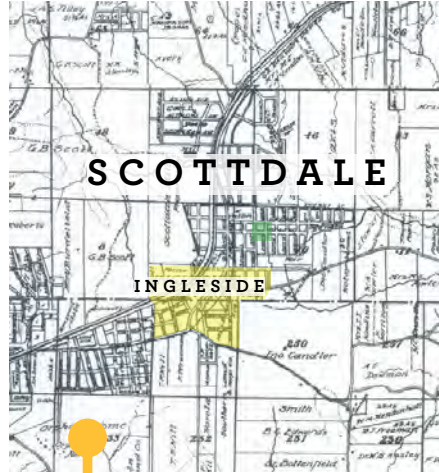


Sandtown Trail between Stone Mountain, the Chattahoochee, and Sandtown (Alabama). In 1845, the Georgia Railroad was extended along this route through (now) Scottdale¹



1916, Georgia Duck & Cordage Mill opens.²

Pre-20th century, Native Americans established the



1915, from Official Map of DeKalb County, Georgia, DeKalb History Center

1920s, Ms. Norma Gay Winchester sells her land in 50' x 150' lots for \$100 each. Lots on the steep slopes on the east side of the Georgia Railroad (known as Eskimo Heights Subdivision) can be sold to Black buyers only.⁸

1900

1910

1920

1930

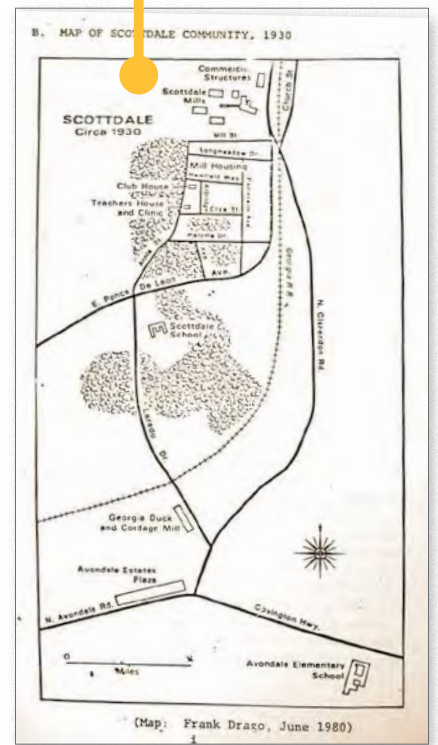


Built on the flatter west side of the Georgia Railroad, Scottdale Mills was an example of rural industrial development. The mill village provided everything workers needed including housing, health services, a general store, laundry, child care, and recreation, including its own baseball team and marching band.²



Rooms in the Scottdale Mills Village housing could be rented for 25 cents per week by employees.²

1900-1915, Scottdale Mills Village was built south of the mill on the east side of the Georgia Railroad. Several of the houses still survive on small streets between Annie and E. Ponce de Leon.²



1980 map sketches the Scottdale Community of 1930⁵



Sources:

1. <https://dekalbhistory.org/blog-posts/a-walk-through-the-past-a-history-of-dekalb-countys-native-american-trails/>
2. "Scottdale Mills Village." April 24, 2018. The DeKalb County History Center, blogpost by Sophia Malikyar. <https://dekalbhistorycenterblog.wordpress.com/2018/04/24/scottdale-mills-village/>



1940, street lights installed in Scottdale



Prior to the 1954 *Brown v. Board of Education* Supreme Court decision, hundreds of “equalization schools” were built in the South. Robert Shaw Elementary and Hamilton High School were two such schools opened for Black students.

1947, Steel, LLC., opens in Scottdale



Robert Shaw Elementary, named after local businessman Robert Shaw—who donated 11 acres for the new schools—and Hamilton High School, named for its first principal, Maud Hamilton, were the first in DeKalb County named for Black citizens. The schools opened in 1955, to 741 students. Fourteen years later, in 1969, the elementary school and Hamilton High School are closed by a Federal District Court desegregation order. The County’s schools remained under judicial supervision until 1997. In 1998, Robert Shaw Theme School reopens and Hamilton High School opens as Hamilton Recreation Center.^{6/7}

1940

1960

1980

2000

2020

1940s – 1960s are a period of rapid growth in Scottdale. In the 1950s, Scottdale Mills employees are allowed to buy their Village homes. Two new schools opened in 1955 (above) and an active PTA developed. In 1959, the Scottdale Planning Council was organized, with participation from the entire neighborhood, meetings were held at Robert Shaw School.

1998, Georgia Duck and Cordage Mill is sold to a corporation



1982, Scottdale Mills closes

2020, Friends of Cedar Park engages Park Pride to facilitate a park Vision Plan



Tobie Kendall Grant (1887-1968), a well-known local business-woman, and “sense-giver,” donates 40 acres for Tobie Grant Park, Recreation Center and the Tobie Grant Library³

SCOTDDALE & CEDAR PARK

Over the years 1900 - 2020

Sources continued:

3. “Tobie Grant.” Feb 12, 2019. The DeKalb County History Center, blogpost by Marshall, Sylvia. <https://dekalbhistory.org/oral-history/tobie-grant/>
4. Price, Vivian. History of DeKalb County: An Illustrated History
5. “Our neighborhood, a historical overview.” Jul 26, 2019. Avondale Rockbridge Civic Alliance, blogpost by Victoria Webb.
6. https://www.dca.ga.gov/sites/default/files/dekalb-county-midcentury-schools_0.pdf
7. <https://www.nytimes.com/1991/02/20/us/supreme-court-roundup-court-to-review-case-from-georgia-on-desegregation.html>
8. Scottdale Black Community, <https://dekalbhistory.org/documents/73ScottdaleBlackCommunity.pdf>



1979-81, plans developed by Baldwin Associates, Inc. and DeKalb County Department of Recreation, Parks & Cultural Affairs for a park on Cedar Street in Scottdale.

It's notable that Scottdale Mills and the Scottdale Mills Village were established on the flatter, upland land to the west of the railroad. The eastern side of the railroad had much steeper topography and was prone to flooding. The eastern side of Scottdale was predominantly settled by Black residents. Although some worked in the mill, early Black residents opened small businesses and provided skilled trades (masons, mechanics, etc.) to the area; many were also employed by the railroad.

Over time, large pieces of land were subdivided into lots. In the 1920s, there are records of lots being sold by Ms. Norma Gay Winchester. She is said to have designated lots on the east side of the railroad specifically to Black families. In 1954 (see plat on facing page), DeKalb County records show that some of the land that would eventually become Cedar Park is then owned by Annie L. Jackson.

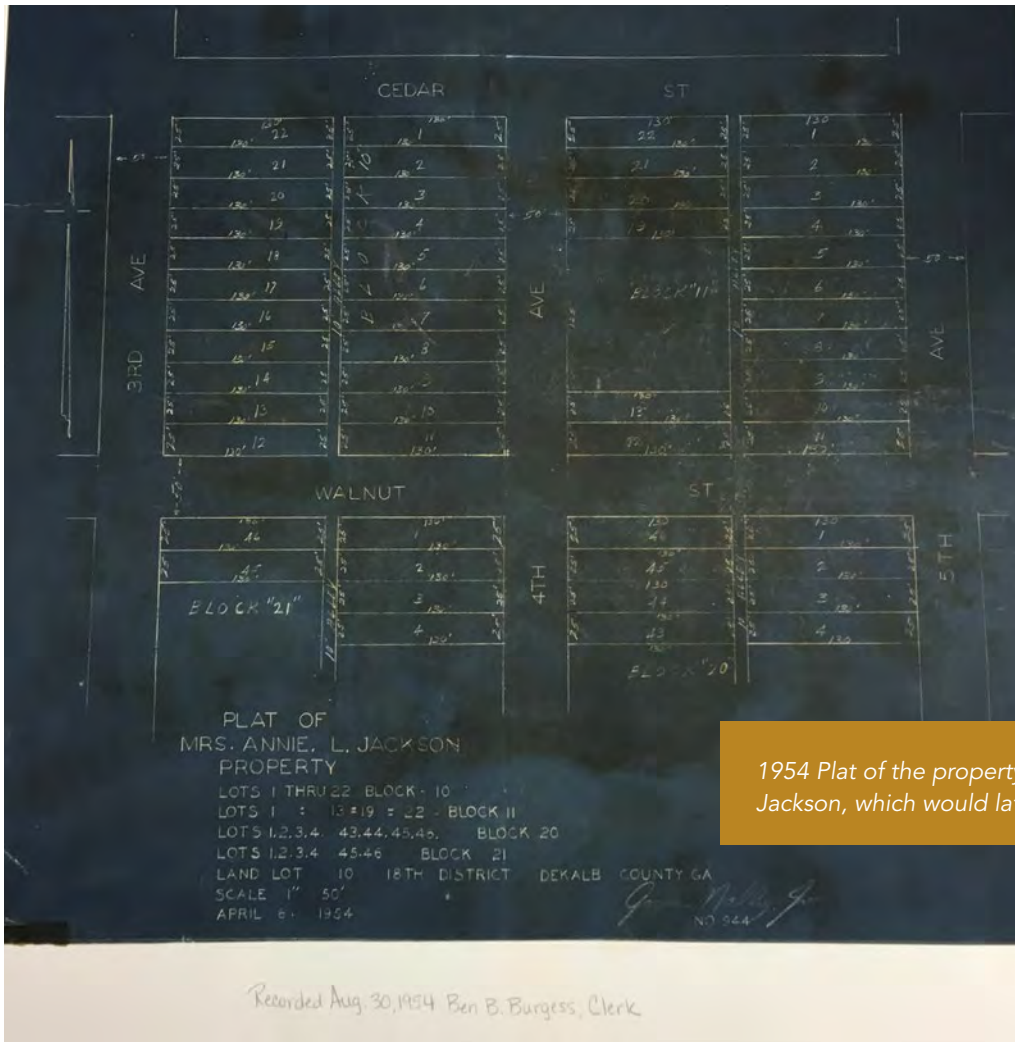
Recent History

It wasn't until 1977 that the 3.76-acre site for Cedar Park was acquired by DeKalb County. In 1979, plans were drafted by Baldwin Associates, Inc., of Doraville, Georgia, for a modern park that included a spray fountain and covered pavilion, two full basketball courts, a multipurpose half-basketball/volleyball court and a half-basketball/badminton court, multi-level playgrounds, and a games area. The lower slopes included a large open lawn and a path leading to Creighton Circle.

The park envisioned in 1979 was a dramatic angular design including expanses of pavement and terraces joined by ramps of concrete and railroad crossties. The design accentuated the sloping site but predated the Americans with Disabilities Act (ADA) of 1990 and its consideration for park users with mobility constraints.

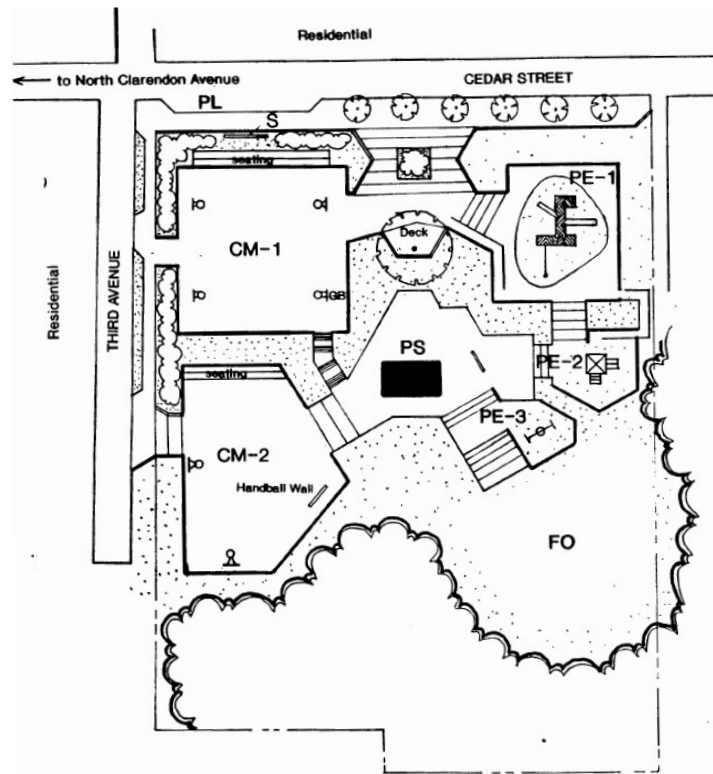
Scottdale was racially divided by the Georgia Railroad track. The white families lived on the west side in mill-owned houses. Black families settled in the pocket of the hilly east side. Ms. Norma Gay Winchester owned land throughout the Scottdale community. She was concerned about black people having someplace to live. In the early '20s she sold her land in lots. The lot size were 50 by 150, and she sold them for one hundred dollars per lot: five dollars down payment and one dollar per week. She made provision in the contract that the Eskimo Heights Subdivision, which was known as Scottdale, be sold to black only.

—Mrs. Jennie Henderson, as recorded for “I Remember Hour” facilitated by the DeKalb Historical Society, Scottdale Hamilton Senior Center, Sep/Oct 1995



1954 Plat of the property owned by Annie L. Jackson, which would later become Cedar Park

Recorded Aug. 30, 1954 Ben B. Burgess, Clerk



CEDAR PARK 704

3 Acres
3165 Cedar Street, Scottdale
Date Drawn: 2/95 SP

LEGEND

GENERAL FACILITIES:

- CM Multi-purpose Courts (2)
- FO Open Field
- GB Basketball Goals (6)
- PE Play Equipment (3)
- PL Parking Lot (3 standard spaces)
- PS Picnic Shelter
- S Entrance Sign



1995 Diagram of the facilities at Cedar Park



Opposite: view facing south from the main entrance into the park at Cedar Street

Existing Conditions

Cedar Park is a 3.76-acre park in the Scottdale neighborhood of unincorporated DeKalb County, Georgia. The park is owned and managed by the DeKalb County Department of Recreation, Parks, and Cultural Affairs. The area is in Super District 6 (Ted Terry) and District 4 (Steve Bradshaw). The park sits amid residential homes, and is bordered by Cedar Street to the north. The headwaters of Indian Creek flow across the southern/lower end of the park. One of the striking characteristics of the park is the drastic elevation change from north to south. Cedar Street lies at an elevation of approximately 1028 feet, while Creighton is at approximately 990 feet above sea level. Indian Creek flows via the park's low point of approximately 976 feet elevation.

Accessibility

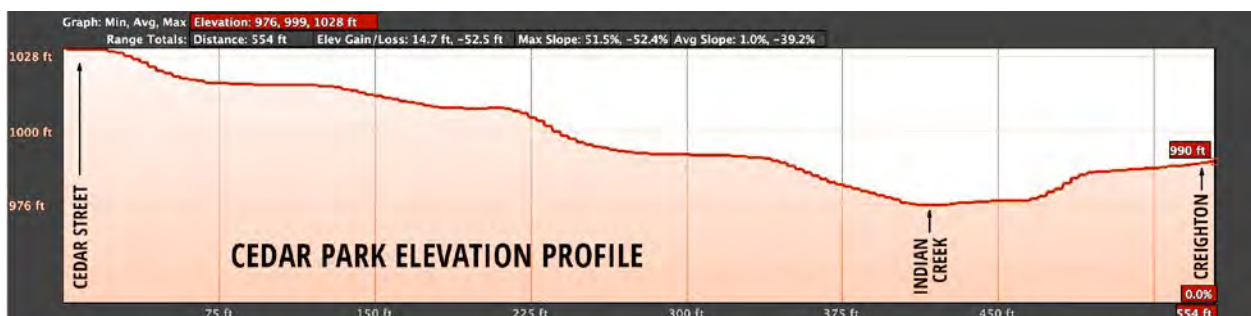
As noted above, the dramatic elevation change within the park brings challenges; accessibility is one of the most urgent

concerns. The 1977 vision sought to highlight the sloped nature of the site but did not consider the difficulty the design would present to those with mobility challenges, strollers, and/or small children. Within the park, steep ramps join the various levels, with additional hand-rail-equipped ramps running along side. Many of the ramps exceed the current slope maximum required by code for public spaces.

The park further deters access by offering only a few on-street parking spaces, none of which are ADA-compliant. Heavy vegetation restricts access physically and visually. Kudzu overgrowth prevents access from Creighton Avenue into the park.

Entrances and signage

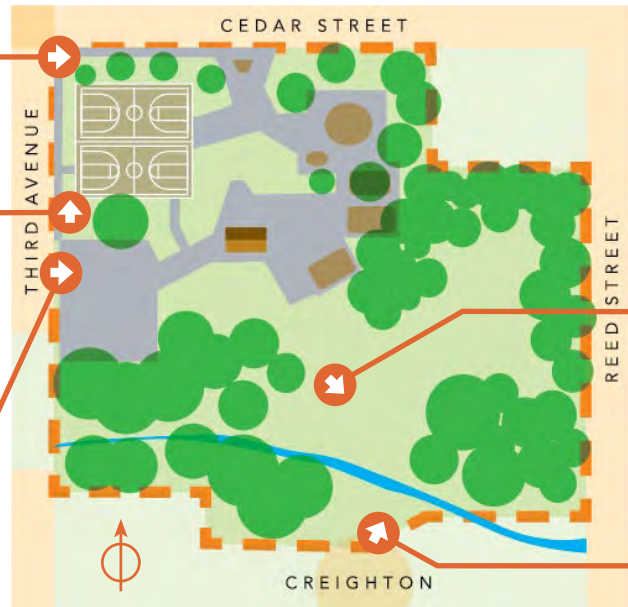
Former planters in the sidewalk have been abandoned although the diamond-shaped paving pattern remains. The primary park sign sits above the basketball courts in the





Below: degradation of concrete and steep slopes along eastern edge of the park.

White arrowheads indicate the camera location



unpaved area between the sidewalk and the park at the NW corner of Cedar Park. It is perpendicular to Cedar Street, clearly visible, and in good condition.

The main entrance to the park is a 44-foot long ramp that drops from Cedar Street into the park at a 23% slope with no handrails or interim resting points.

Additional entrances exist from Third Ave. One entrance accesses the basketball court directly; it is steep but usable. The other Third Ave entrance was intended to access the lower courts area, which have been erased by sedimentation and overgrowth. At this point, the sidewalks on Third Avenue are broken, concrete slabs are askew, and the slopes far exceed current maximum allowances. There is no signage at either of these side entrances. Third Avenue itself, which ends just north of Indian Creek, is encroached upon by overgrowth and subject to illegal dumping. Abandoned utility poles and lines are present. The park from this perspective appears unwelcoming and dangerous.

The south end of the park adjoins the cul-de-sac of Creighton Avenue. When left unmanaged, overgrowth of invasive plant

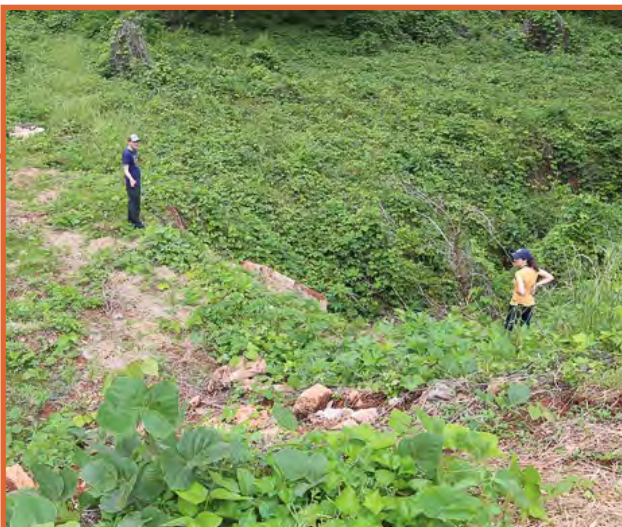
species and steep slopes restrict entrance into the park from Creighton Avenue. There is evidence of an informal footpath from the cul-de-sac into the park. Indian Creek travels through a culvert that serves as a crossing point but the entrance has never been formalized. There is no signage for the park at Creighton Avenue.

Vegetation and Soil

The mature canopy trees in the eastern edge of the park and on the stream banks are succumbing to invasive plant species including kudzu and English ivy. Many canopy trees have already fallen, stumps projecting amid the blanket of kudzu.

In 2019, two large oaks, which featured prominently in the park, had to be removed due to age and hazardous conditions. The remaining tree species include pines and sweetgums. Many of the ornamental plantings installed in 1978 have since disappeared, are overgrown, or are at the end of their useful lives.

Below, left: view from Creighton Avenue toward the culvert over Indian Creek; below, right: view toward Creighton Avenue cul-de-sac from the lower lawn of the park. Stumps of former canopy trees are covered by layers of kudzu.





White arrowheads indicate the camera location





Top: remnants of a water features
 Below: pavilion and picnic tables
 Facing page: views of the upper and lower courts

Both court areas and the stair between are impacted by sediment due to soil erosion. The lower court area is barely discernible under the soil deposition. There is extensive fatigue cracking on the surface of the two basketball courts. In other areas unchecked drainage has cut erosion gullies, some of which are hidden by overgrowth.

The granite walls in the park are in good condition, with minor exceptions where the mortar is crumbling due to erosion. The concrete walkways are broken in multiple places, especially along the west edge of the park. The railroad ties, used for walls and for walking surfaces need to be replaced with a more durable, less toxic material. Tree roots have broken many of the sidewalks on the perimeter of the park.

Seating and gathering places

Throughout the park, stone walls conveniently double as seating. There are four picnic tables under the small pavilion in the center of the park. This paved area has been the central community gathering space but is in need of updates. The water play feature (top photo) that was once an active splash area surrounded by tiered steps, now protrudes from several inches of soil that has accumulated from the hillside above. There is no additional seating associated with the basketball courts or playgrounds other than adjacent walls.

Active sports facilities

Cedar Park is equipped with two full basketball courts in its NW corner. The courts are in poor condition and the nets were removed during the 2020 COVID-19 pandemic. On the middle-west side of the park there is evidence of two additional half basketball courts and provisions for a badminton court. The 1981 plans reveal that shuffleboard was also planned in this paved area. None of these amenities remain in the middle paved area. The 1981 plans are included in Appendix E.



Above: two remaining play structures



Playgrounds

Cedar Park has two existing play structures, both of which appear to be geared toward younger children. The larger structure is located in the NE corner of the park. The second, smaller structure on the middle level of the park also on the eastern side. The structures are connected by wide concrete walkways and narrower ramps with metal handrails. The intent of the narrower ramps with handrails was for wheelchair access however the design may not meet current ADA standards.

The play structures are surrounded by a layer of mulch. Additionally, the high retaining wall on the southern edge of the lowermost play terrace does not have adequate guard railing to prevent falls.

The play structures are in need of replacement, having become faded over time. Some have missing parts, such as the tire swing. Other equipment shown on the original plan is no longer present in the park.

Open lawn

North of the creek, below the active areas of the park, there is a generous open lawn. Originally intended to be much larger, the current lawn is slowly being encroached upon by kudzu growing on the steeper slopes and woody seedlings in the wooded edges of the park. A baseball diamond was in the 1978 plan for the park but no evidence was discovered to suggest it was actually installed. The area slopes gently toward the creek with a south-facing aspect. Overgrowth hides this part of the park from view and it is rarely used.

Lighting

In the fall of 2020, flood lighting was installed on poles at two locations in the park. Light from these fixtures spilled outside the boundaries of the park, prompting calls from neighbors asking that the lights be replaced with less intrusive alternatives.

Right: Tire swing, missing parts and showing signs of wear

Middle right: open railings next to drops of 4 - 5 feet onto concrete

Below: slope of the open lawn



White arrowheads indicate the camera location





Community Engagement

Park Pride's mission is to engage communities to activate the power of parks. In service of this mission, Park Pride offers visioning grants to parks in the City of Atlanta and unincorporated DeKalb County every year through a competitive application process.

The visioning staff at Park Pride facilitates a public engagement process for parks awarded visioning, and community feedback informs and guides the creation of the vision plan. The vision plan balances community input with applicable laws and regulations and accepted best practices to arrive at a realistic park plan that supports community desires and needs. The vision plan includes a conceptual plan and comprehensive report for the park, produced to professional landscape design standards. This plan is intended to be used by community groups to fundraise and advocate for desired improvements in the park.

In spring of 2020, the Friends of Cedar Park was awarded a park visioning grant. The group was interested in revitalizing the long-neglected park to better serve the rapidly growing neighborhood and raise the park facilities to 21st-century standards. The year 2020 was one fraught with unprecedented challenges. The global COVID-19 pandemic forced everyone to rethink how a community engagement process could work in an environment where physical distancing was necessary to protect public health. Using

new online video conferencing applications for meetings, traditional fliers and signage, plus a website created expressly for the visioning process, Park Pride was able to reach over 400 people directly around the park despite public health restrictions.

Steering Committee

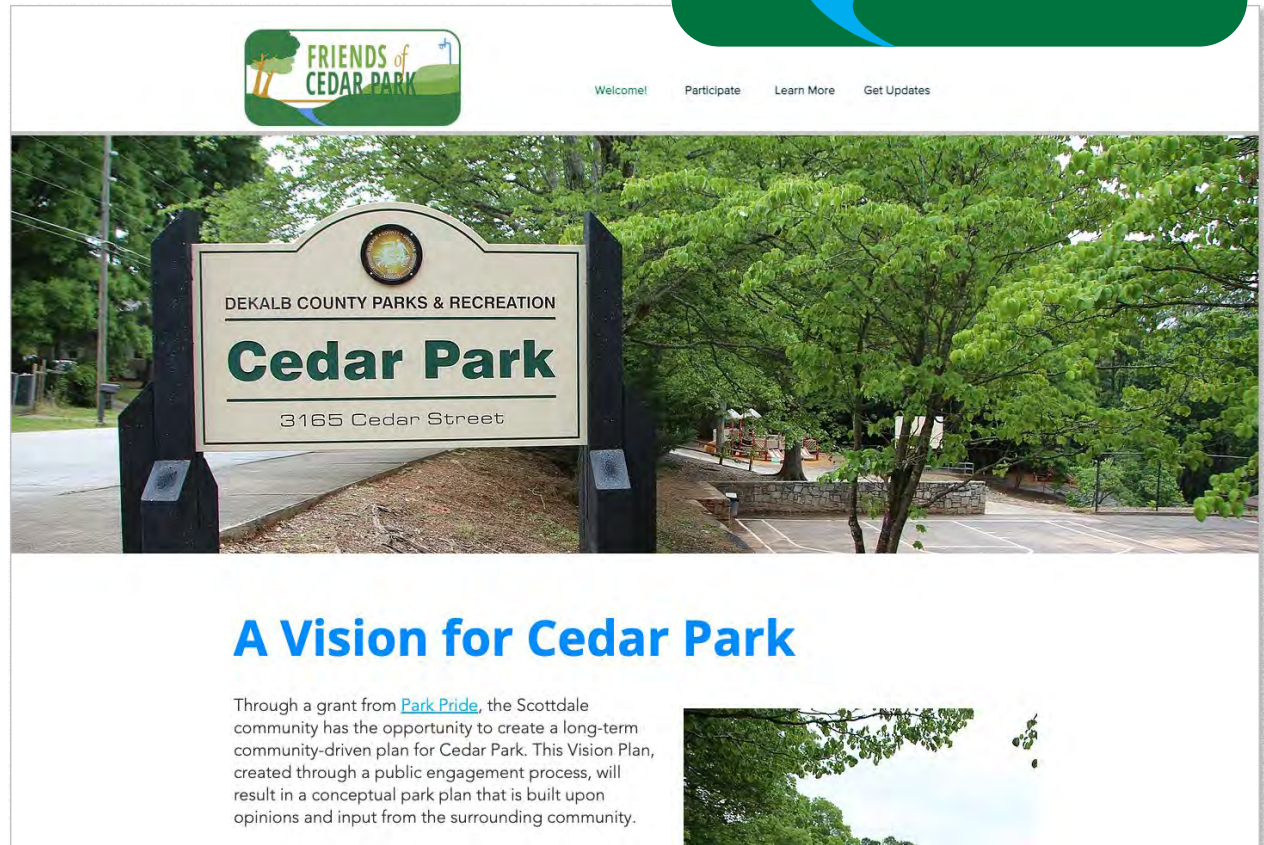
The visioning process was led by a volunteer steering committee of neighbors, assembled by the applicant. Effort was made to include people of different ages, at different points in their lives, from young families to retirees, people with and without children, dog owners, new residents, and longer-term residents. One challenge faced by the steering committee was getting legacy residents (whose families have lived in Scottdale for multiple generations) involved in the visioning process. Many factors could have contributed to this, ranging from time constraints, to technology challenges (all meetings were held virtually over a wifi connection), to feelings of distrust or apathy following patterns of deferred maintenance of public infrastructure.

Between June 2020 and December 2020 the steering committee met monthly, reviewing community input, preparing materials, and vetting results. They were charged with representing their neighbors and the voices of the broader communities surrounding the park.

Website and logo

To provide an additional source of information and way to participate in the Visioning process, Park Pride created a logo and website for the Friends of Cedar Park. The logo provides identification for activities associated with the park and the Friends of Cedar Park group. The website, created on a free website platform, contains pages about the visioning process and final plan, the guiding principles, project priorities, location, context, existing conditions, and

history. Recordings of public meetings, and survey and poll results are also available. After the visioning process was completed, management of the website was turned over to the Friends of Cedar Park so that the site could continue as a resource for community information, events, notifications, and local history.



A Vision for Cedar Park

Through a grant from [Park Pride](#), the Scottdale community has the opportunity to create a long-term community-driven plan for Cedar Park. This Vision Plan, created through a public engagement process, will result in a conceptual park plan that is built upon opinions and input from the surrounding community.



Participate: Vision plan, guiding Principles, project priorities



Learn More: Location, context, existing conditions, and history



Get Updates: recordings of meetings, survey and poll results



Community Survey

A survey, produced in paper and digital format (paper version below) was used to capture public input. Paper surveys were distributed to households within a 10-minute walk of the park and upon request. Flyers with QR codes linking to the online survey were also posted in the park. There were 118 responses to the Cedar Park survey,

providing statistically significant results given a confidence level of 90% and a margin of error of 8%. This is based on an American Community Survey (ACS) population of 3689 in the Scottsdale community. The survey was open August 23 - October 13, 2020.

Graphic results from the community survey are shown on the following pages. Complete responses and comments are in Appendix A.

Park Visioning Public Meeting Schedule

Big Ideas Meeting
Tuesday, September 15
6:30 pm – 7:30 pm
Virtual Zoom Meeting

Preliminary Plan Review
Tuesday, October 13
6:30 pm – 7:30 pm
Virtual Zoom Meeting

Vision Plan Review
Thursday, November 19
6:30 pm – 7:30 pm
Virtual Zoom Meeting

Tear off and save this schedule!



You can also take this survey online, just take a photo of this QR code or go to tinyurl.com/Cedar-Park

Survey closes on October 13, 2020

Find links to meetings at www.friendsofcedarpark/wixsite.com/welcome

or join our Friends of Cedar Park (Scottdale, GA) facebook group

Does anyone in your household have mobility challenges that prevent them from enjoying the park?

Yes (briefly describe park conditions that prevent access) No

Does your household include children? (check all that apply)

infant-5 yrs 6-12 yrs teenagers No

In general, would you be willing to volunteer for clean-up days in Cedar Park?

Yes (contact info) _____ No

Are you interested in joining the Friends of Cedar Park?

Yes No Maybe

Please add additional comments here or other concerns that haven't been addressed.



Take part in the Vision Process for **CEDAR PARK**

facilitated by Park Pride for Friends of Cedar Park
www.friendsofcedarpark/wixsite.com/welcome

Dropbox at 3148 Cedar St
Please _____

Please answer all questions with Cedar Park in mind! Thank you!

What is your favorite thing about Cedar Park today?

What are the biggest challenges facing Cedar Park?

Why do you visit Cedar Park? (please check all that apply)

<input type="checkbox"/> play basketball	<input type="checkbox"/> exercise
<input type="checkbox"/> walk or run my dog	<input type="checkbox"/> community events
<input type="checkbox"/> meet a friend	<input type="checkbox"/> eat my lunch
<input type="checkbox"/> cookouts or picnics (small groups)	<input type="checkbox"/> to enjoy nature
<input type="checkbox"/> reunions (large groups)	<input type="checkbox"/> shortcut through neighborhood
<input type="checkbox"/> play on playground or take my child to playground	<input type="checkbox"/> none of these (please write in your answer below)

How do you get to Cedar Park?

walk bike drive other

Should Cedar Park have an off-leash dog park?

Yes No

Comments

What are the TOP FIVE amenities you would like to see added or improved in Cedar Park? (Select a maximum of 5)

<input type="checkbox"/> baseball (youth)	<input type="checkbox"/> outdoor fitness equipment
<input type="checkbox"/> basketball	<input type="checkbox"/> place to grow food/garden
<input type="checkbox"/> community space/shelter	<input type="checkbox"/> places to sit and enjoy nature
<input type="checkbox"/> grilling area	<input type="checkbox"/> restroom
<input type="checkbox"/> multi-generational play area	<input type="checkbox"/> open lawn for casual pick-up games and play
<input type="checkbox"/> new playground	<input type="checkbox"/> soccer (youth)
<input type="checkbox"/> off-leash dog run	<input type="checkbox"/> tennis court
<input type="checkbox"/> shade trees	<input type="checkbox"/> water feature

Other (please write-in)

What are the TOP THREE conditions would make you more likely to visit Cedar Park? (Select a maximum of 3)

<input type="checkbox"/> more parking	<input type="checkbox"/> less concrete
<input type="checkbox"/> park entrance for neighbors on Creighton St	<input type="checkbox"/> better sidewalks/crosswalk leading to the park
<input type="checkbox"/> more shade	<input type="checkbox"/> creek restoration
<input type="checkbox"/> more grass/lawn	<input type="checkbox"/> remove invasive plants
<input type="checkbox"/> bike racks/repair stations	<input type="checkbox"/> organized programs/events
<input type="checkbox"/> drinking fountain/water bottle filler	<input type="checkbox"/> ADA-compliant (accessible) entries and walking paths
<input type="checkbox"/> better park safety	

Other (please write-in)



Help create a vision plan for Cedar Park!

Through a grant from Park Pride, we have an opportunity to create a long-term plan for Cedar Park that includes input from the whole community. This Visioning process will result in a conceptual park plan that is built upon opinions and input from the surrounding community.

Your opinion is crucial to the success of this process. The Cedar Park Steering Committee, composed of neighborhood residents and Park Pride, will be hosting a series of public meetings over the next several months to collect your ideas. These ideas will guide future improvements to the park.

Although this plan will reflect the priorities of the community, all projects will need to be approved by DeKalb County Department of Recreation, Parks, and Cultural Affairs.

Taking this survey is the first step in the public engagement process.

Please also plan to attend the upcoming public meetings to help us envision the future of Cedar Park. Watch for yard signs around the neighborhood and for notices in social media for the meeting schedule and other opportunities to take part!

What is your favorite thing about Cedar Park today?

For a complete list of responses, see Appendix A

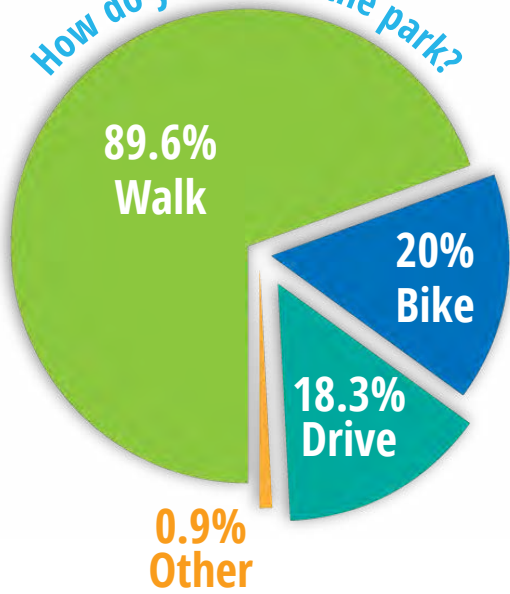


“I like the terraces, and how it fits the natural topography of the area.”

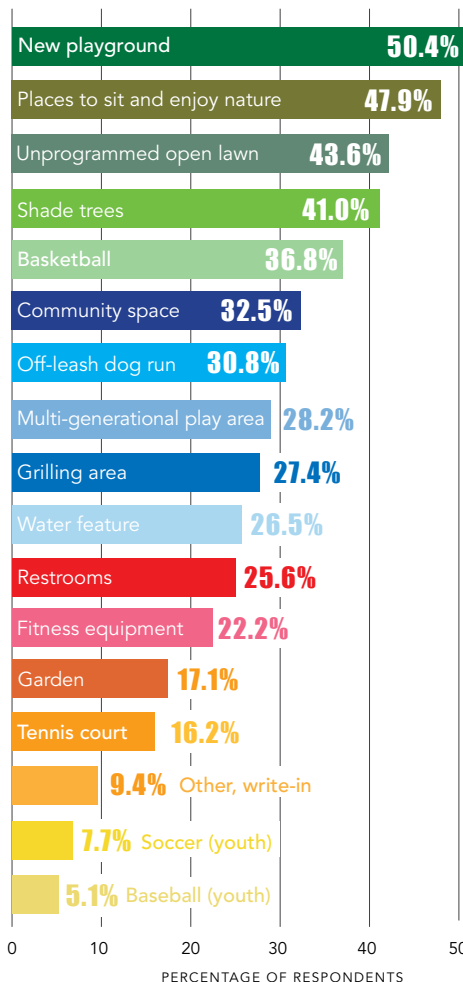
“Although rims and nets have been down, my favorite thing about Cedar Park are the basketball courts. I also like the play spaces for my daughter, and being there as a family.”

“Having a nice park within walking distance of my home.”

How do you get to the park?



What are the top 5 amenities you'd like to see added or improved?



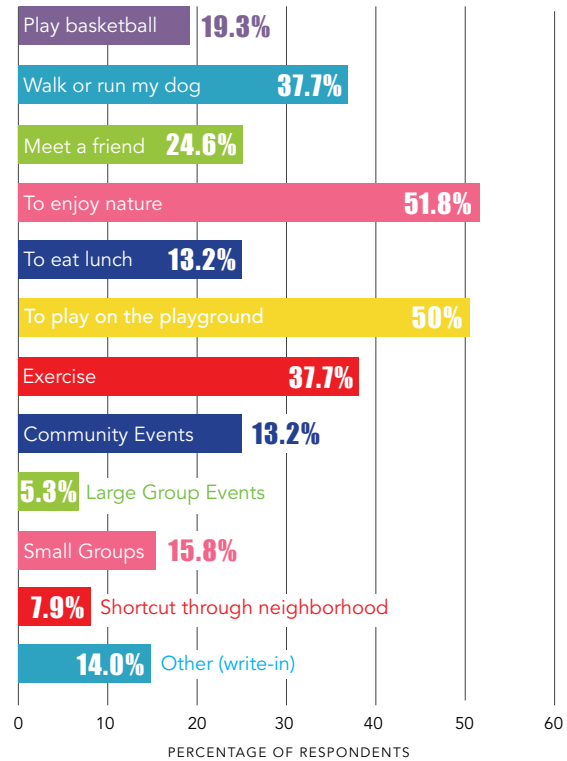
118

PEOPLE RESPONDED

SURVEY RESULTS

Community Opinion Survey

Why do you visit Cedar Park?



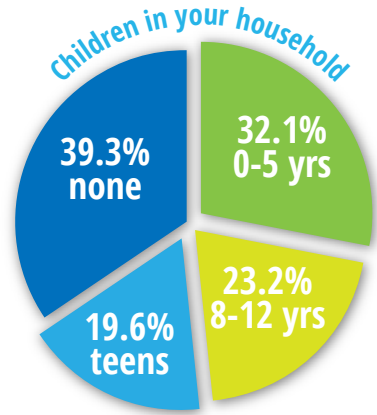
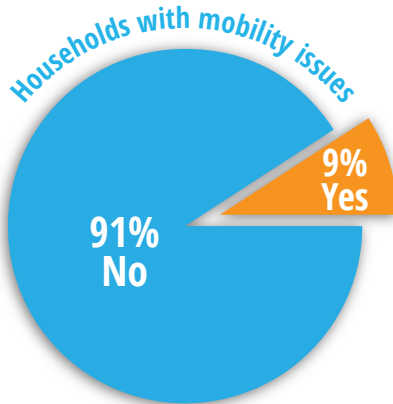
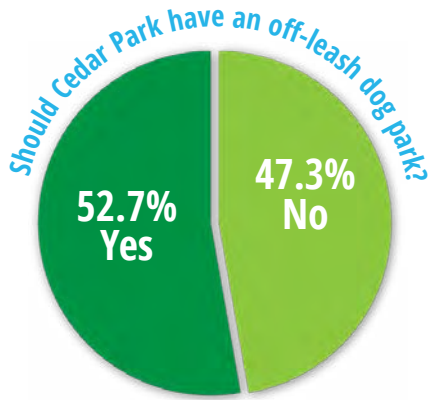
What are the biggest challenges you face or concerns you have when you go to Cedar Park?

For a complete list of responses, see Appendix A

“Too much concrete”

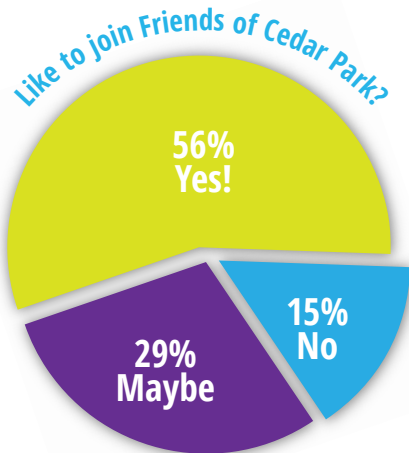
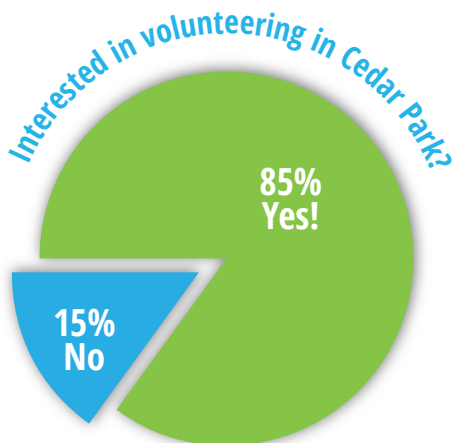
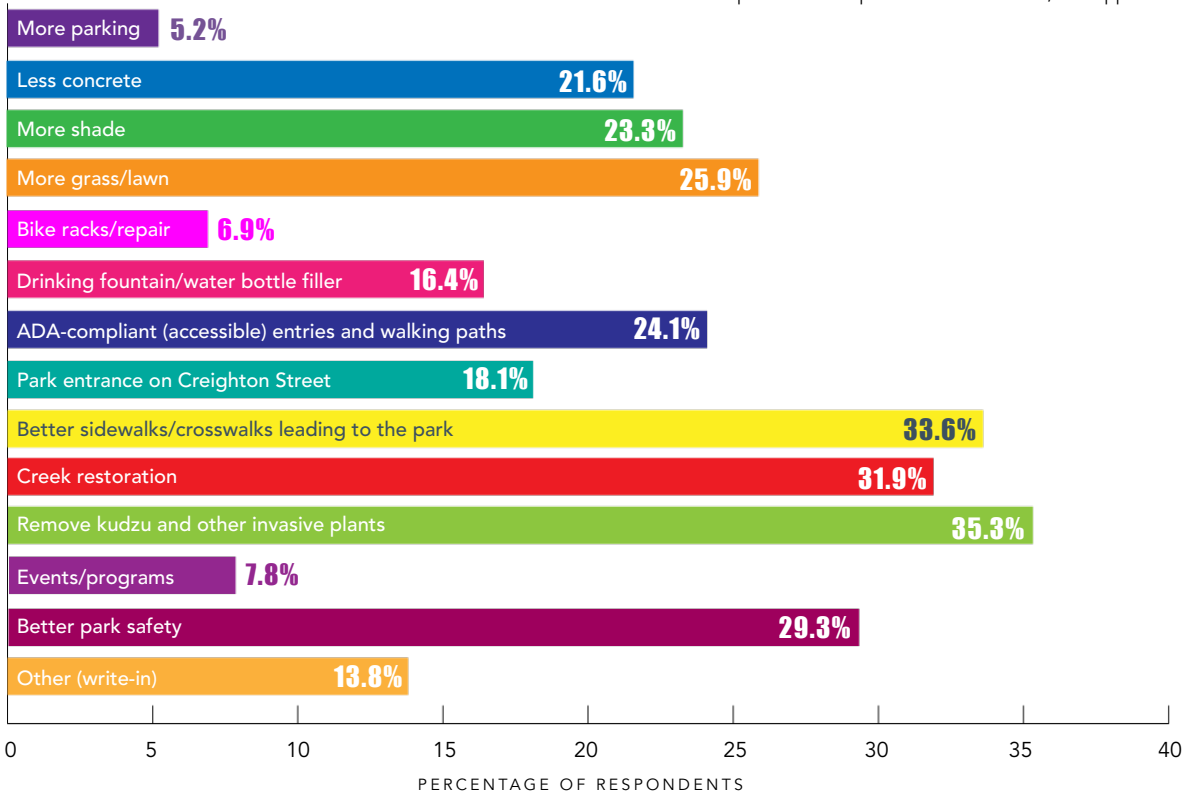
“Everything appears to be pretty run down.”

“The steep path down to the playground. It’s very difficult juggling a stroller, kids, and a dog. Also the cleanliness has been a concern in the past.”



What top three conditions would make you more likely to visit Cedar Park?

For a complete list of responses and comments, see Appendix A



Accessibility/ADA

- Access
- Accessability
- Accessibility
- ADA
- ADA
- ADA Compliant
- Better access
- Better access
- Connectivity with bridges
- Entrance on south side of park
- Foot path from park to portion of Third that connects with Rockbridge.
- Not as steep
- Parking
- Parking
- The access and how far back into the property the grass area is. Too much concrete.

8 requests for less concrete

15 comments

Beautification

- Aesthetics, beauty and the scent of flowers
- Beauty
- Flowers & plants along a walking path
- Landscaping
- Landscaping
- More landscaping
- More trees & green space
- Native plants

8 comments

Ways to appreciate nature

- Able to see and appreciate the creek
- Benches etc through green space to sit and enjoy
- More shade and peaceful places to sit
- Walking in serenity
- Walking paths and seating
- Water

6 comments

Maintenance

- Better drainage
- Better maintained basketball court
- Clear the plants
- Manage erosion
- More trash cans
- Reduce kudzu
- Reduce kudzu
- Removal of invasive plants
- Remove invasive
- Remove invasives and plant natives
- Restore creek
- Restore creek, remove kudzu
- Updated basketball court with fence
- Use of topo to create waterfall drainage feature

14 comments

Play

- good quality playground
- Good quality playground
- Larger play areas/structures
- Needs a splash pad
- Place to sit near playground for moms with babies and active kids
- Splash pad
- Used of topo to incorporate play feature

7 comments

2 requests for workout stations

Community spaces

- Better communal areas
- garden spaces
- Grills Please
- Inviting to community somehow
- More pavilion space
- Plant Fruit Trees

6 comments

POLL 4

What would you change about Cedar Park to help it better serve you?

No - Dog park

- No dog park
- No dog park
- No dog park
- No dog park
- No dog park

5 comments

Yes - Dog park/space

- Dog friendly space
- Dog park
- Dog park
- Dog park
- Dog park
- Dog park
- Dog park
- Fenced dog park
- Fenced dog run
- Yes to a Dog Park

10 comments

Lighting/Safety

- Better lighting
- Better lighting
- Better lighting
- Better lighting
- Lighting
- Lighting
- Lighting
- Safer and less closed off
- Safer fencing especially for young kids
- Safety
- Safety
- Safety
- Safety

13 comments

Facilities

- Ampitheatre
- Basketball courts
- Keep basketball courts
- Fenced and updated basketball court
- Bathrooms
- Restroom
- Restrooms
- Splash pad
- Splash pad
- Splash pad or water feature
- TENNIS COURTS
- Tennis Courts
- Tennis courts
- Tennis Courts
- Large-Open-Use-Field
- Open field
- Open play area
- Walking paths
- Walking paths
- Walking paths with plenty of shade
- Walking paths/sidewalks that loop
- Loop walking trail
- Running path
- Workout area
- Exercise stations on walking path

25 suggestions

Play features

- Better playground
- Quality playground equipment for all age children
- Water feature for kids to play in! So needed in these hot Atlanta summers
- Water features
- Keep-the-Water-Pipe-Structure

5 suggestions

Community spaces

- Community Garden!!
- Garden space
- Little free library or food pantry
- Multiple areas for different uses
- Multiple small gathering areas
- Neighborhood garden
- Music feature
- Think community
- Think diverse community
- Inclusiveness
- Inclusiveness
- Build community and think attractional space for parties and concerts

12 suggestions

Maintenance Priorities

- Maintain basketball courts
- Maintain basketball courts
- Maintain/keep basketball courts
- Maintenance
- Renovate basketball courts.
- Clean up kudzu & run down areas
- Pollinator and native plants to replace the non-natives.
- Restore creek
- Mosquito control
- Longevity and self sustaining
- Plenty of trash and recycling receptacles

11 suggestions

Include History

- Something references Toby grant
- Something referencing Muskogee Indian
- Plaque that offers brief history of area
- Preserve memorial for our neighbor Lamont

4 suggestions

11 said **Yes!** to a dog park

Can we think about dogs a little more?

2 said **No!** to a dog park

3 said
Please think about safety!

POLL 5 What else should we be thinking about when it comes to the design of Cedar Park?

Access and Circulation

- Easy access
- Access
- Access from Creighton
- Accessibility for bikes/strollers/wheelchairs
- Better Accessibility
- Better Entrance
- Easy access
- Easy access from all sides
- Easy walking paths and walkways
- Parking
- Parking
- Parking
- Parking

13 suggestions

Aesthetic features

- Water features
- Aesthetic beauty
- Beautiful pollinator plants
- Overlook!!
- Mid-century modern feel to match buildings in area
- Good mix of shade and sun
- Entrance Archway with plants

7 suggestions



Provide places to appreciate Nature

- Creek
- Benches and paths, with native gardens
- Benches for seating in open spaces, where people can walk to and sit.
- Add benches & walking paths
- Native plants
- Natural beauty
- Keep natural areas

7 suggestions

Public Meeting 2

For the second public meeting, the community gathered on October 13, 2020, once again via the Zoom online meeting platform. **Twenty-three** community members attended plus DRPCA Director Chuck Ellis; Marvin Billups, DRPCA Deputy Director; Vineet Nagarkar, DRPCA Project Manager; (now) Super District 6 Commissioner Ted Terry; and Robin Flieg, Constituent Services Coordinator for District 4 Commissioner. The meeting was live-streamed on the Friends of Cedar Park website.

Community survey results to date were shared as well as the results from the polling questions from the first public meeting. These results had been used by the steering committee to develop Guiding Principles for the redesign. The five **Guiding Principles** were shared and also posted on the Friends of Cedar Park website. These principles serve as check points throughout the vision process. Each design idea and decision is cross-checked and must uphold or support one or more of the principles.

Finally, the two draft concept plans were presented with a brief summary of each. The concept plans were also available on the Friends of Cedar Park website for closer inspection. Public comment on the two draft plans was invited via an online survey, which was open from October 13 through October 30, 2020. Public input was compiled and reviewed by the steering committee at the next steering committee meeting and the comments were used to shape the final conceptual plan.

See the following pages for a comparison of the two draft concept plans.

Public Meeting 3

Thirty-six people gathered virtually for the final public meeting on November 19, 2020. At this meeting, community members, public officials, and the steering committee reviewed the final Vision Plan and set priorities.

GUIDING PRINCIPLES

Provide a welcoming and safe space for all members of the community

Prioritize accessible entrances, circulation, and pedestrian connectivity to the park

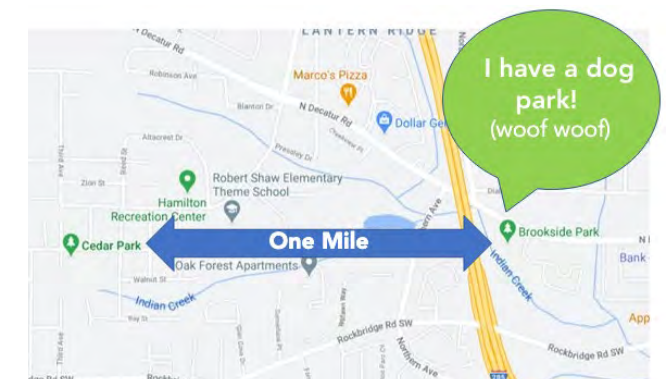
Offer a balance of active uses and spaces that encourage community gathering and enjoyment of nature

Promote maintenance practices and community involvement that will enhance natural ecosystems, control invasive plants, and maximize usable park space

Create a forum to support ongoing community input and provide park-related information, events, and local history

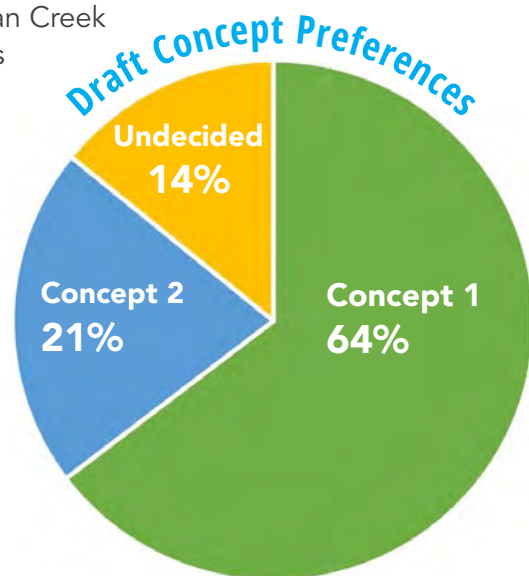
Dog Park

Although 54% of survey respondents supported a dog park, regulations determined that a dog park would not be permissible. A dog park would consume all of the park's open field space and would have fallen within the 75' stream buffer. DRPCA encourages use of Brookwood Park's dog park and continues to welcome on-leash dogs at Cedar Park.



Features included in BOTH Preliminary Concepts 1 and 2

- Open sightlines internally and externally to the neighborhood
- Provide entrances on the south, southwest, west, and north to increase park use and accessibility
- Upgrade and maintain park facilities to create a place that feels welcoming and inviting
- Add benches and gathering points throughout
- Prioritize accessible entrances and internal circulation, as well as pedestrian connectivity
- Remove steeply paved slopes and ramps (any greater than 8%), bringing the park up to ADA compliant standards throughout
- Repair the sidewalks on the perimeter of the park, add pedestrian crossings on Cedar Street, and recommend traffic calming strategies on Cedar
- Provide trails along the creek and open field
- Offer a balance of active uses, community gathering spaces, and areas to experience nature
- Recommend maintenance practices that will enhance local ecosystems, manage invasive plant species, and maximize usable park space
- Introduce green infrastructure to detain and manage stormwater as well as minimize soil erosion and sedimentation
- Restore Indian Creek and its banks within the park



Cedar Park VISION PLAN

PRELIMINARY CONCEPT 1

Cross-section looking north toward Cedar Street from park

CEDAR STREET

THIRD AVE

THIRD AVE

Scale 1:20

Facilitated by **park pride**

FRIENDS of CEDAR PARK

OCTOBER 13, 2020

Connections to the park from Third Avenue (north & south)

Invasive plant removal and streamside reclamation of park space

New entrance from Creighton Ave

Community-scale gathering space with pavilion

Sculptural playground, centrally located with accessible rubberized surfaces

Inclusive swings

Slides and climbing walls on existing slopes

Plus, open field large enough for up to U-8 youth soccer

Seating throughout park

Concept 1 features

- This concept highlights the park's topography and views with a new entrance off Cedar Street. A series of stairs separated by generous landings leads parkgoers into the park, providing uninterrupted views over the entire park. Each landing provides built-in seating. Views are framed

- by two new canopy trees, replacing the recently removed oak that once occupied the centerline of this view
- From the final landing, stairs lead to the renovated basketball courts in the northwest corner of the park and, along with a gentle ramp (5% slope), a new community pavilion in the northeast corner

- A relocated primary playground becomes the park's focal point, clearly visible from the Cedar Street and Creighton Avenue park entrances, it is also adjacent to the new ADA-compliant parking area off Third Avenue

(Continued on the following page)

(Concept 1 features, continued)

- Rain gardens, bioswales, open lawns, and woodlands to manage stormwater and erosion
- A woodland garden under existing trees
- Hillside slide and boulder wall connecting the 2-5 year-old play area with the 5-12 year-old play area
- An outdoor fitness area for teens and adults between the playgrounds and the open lawn
- An ADA-accessible picnic table overlooking the open lawn, within easy reach of the parking area
- New fenced doubles tennis court
- Small covered pavilion in the open field for use as a fieldhouse, small gatherings, or shaded spectating
- Soft-surface walking paths around the open fields and descending to the creek and through to the south end of Third Avenue and Creighton Avenue pedestrian entrances

Concept 2 features

- Repetition of the angular design featured in the original 1981 plan, in which angles were to be in multiples of 15° from the centerline of Cedar Avenue
- Facilitates a phased approach to implementation, using existing concrete (where it meets code requirements) and editing out unnecessary paving
- From Cedar Street three sets of wide stairs descend to the upper park level, separated by two landings, one with benches overlooking the playground
- Basketball court area features new benches at the interior entrance and a new side entrance off Third Avenue
- A small covered pavilion at the upper park level welcomes visitors and overlooks the park
- Retaining wall around basketball court manages soil erosion and sedimentation with stabilizing boulders
- Renovated playground with a rubberized surface, added seating, and removal of unnecessary concrete



- New, larger pavilion set in grass with multiple tables and a large grilling area
- Shaded gathering area overlooking the playground and open field includes multi-bench swings and space for lawn games
- Adventure play area including a hillside slide, boulder scramble, and climbing wall
- New lower court, available for doubles tennis or dual tennis and pickleball
- Stair between the upper courts and mid-level pavilion area is removed, reconfiguration of slope as grassed terraces to decrease erosion and provide a seating area
- Soft-surface walking trail through the reclaimed slopes along the creek, terminating in a creekside gathering area amid the canopy trees
- Walkway from the Creighton Avenue entrance across the stream to an open platform for gathering or watching games being played on the open lawn

Cedar Park

VISION PLAN

2020



Renovated basketball courts with erosion control



New Cedar Street entrance with terraced slopes and seating



Community gathering space with pavilion with grills and tables



Playground centrally located with accessible surfacing



Inclusive swings



Slides and climbing walls on existing slopes



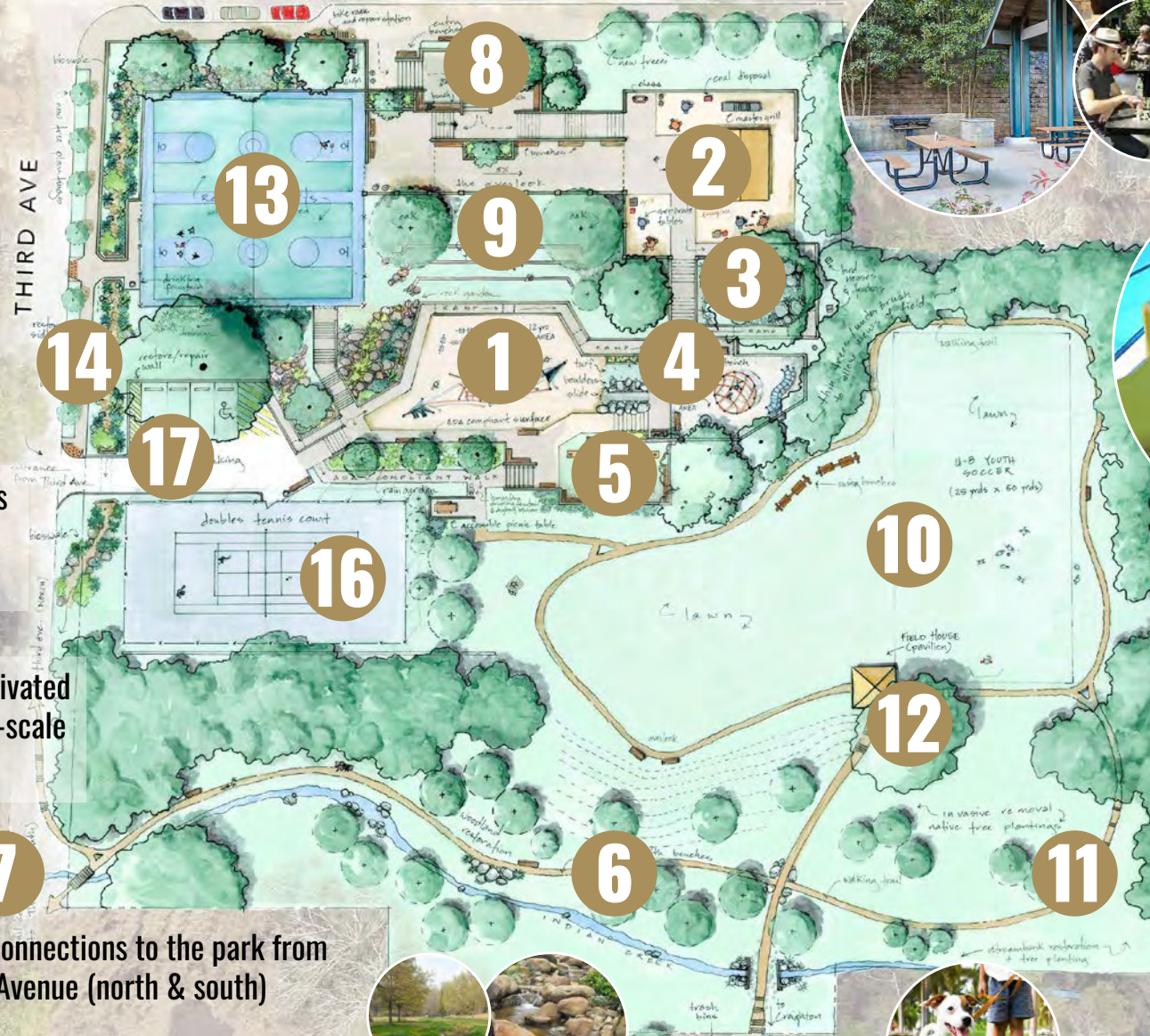
Open field large enough for U-8 youth soccer



New park entrance at Creighton Ave



Invasive plant removal, new walking trails, and streamside reclamation of park space



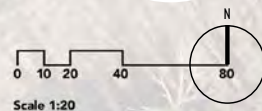
Seating options



Mobility access and racquet sports court



Motion-activated pedestrian-scale lighting



Trail connections to the park from Third Avenue (north & south)



NOVEMBER 19, 2020

Guiding Principles for the Cedar Park Vision Plan

Provide a welcoming and safe space for all members of the community

Prioritize accessible entrances, circulation, and pedestrian connectivity to the park

Offer a balance of active uses and spaces that encourage community gathering and enjoyment of nature

Promote maintenance practices and community involvement that will enhance natural ecosystems, control invasive plants, and maximize usable park space

Create a forum to support ongoing community input and provide park-related information, events, and local history

Vision Plan

Based on public opinion gathered throughout the visioning process, a final vision plan for Cedar Park was created. The vision plan has been divided into projects and described below. Order of priority and approximate cost (2020) for each project is included in the following section, Projects & Budget. Projects can be undertaken separately, in groups, or all at once.

Summary of Vision Plan Features

- 1 Centrally located playground, clearly visible from all three park entrances—perhaps sculptural in style—becomes the park’s focal point
- 2 A larger community pavilion with master grill and community tables, surrounded by additional picnic/cookout spaces, and a chess table
- 3 A woodland garden under existing canopy trees
- 4 A playground for younger children with a hillside slide and boulder wall connection to the central play area
- 5 A seating area with swing bench and space for lawn games adjacent to the playgrounds and overlooking the lawn
- 6 Reclamation of unused park space and opening views into the park by removal of overgrowth, plus streambank restoration and replanting
- 7 Pedestrian trail connection to the south segment of Third Avenue
- 8 A new entrance off Cedar Street, featuring a series of stairs separated by generous landings, each with seating and views of the entire park
- 9 Terraced seating on slopes
- 10 Open field for unprogrammed play
- 11 Soft-surface walking paths around the open fields and descending to the creek and new pedestrian entrances
- 12 Small covered pavilion in the open field for use as a fieldhouse, small gatherings, or shaded spectating
- 13 Renovated basketball courts in the northwest corner of the park
- 14 Rain gardens, bioswales, open lawns, and woodlands to manage stormwater and erosion
- 15 New entrance at Creighton Avenue
- 16 New racquet sports court to be configured as determined by the community, with rebuilt retaining wall and fence
- 17 A new ADA-compliant entrance and parking area off Third Avenue, adjacent to playground

More detailed descriptions of the projects can be found on the following pages.

Cedar Park

VISION PLAN

2020



Renovated basketball courts with erosion control



New Cedar Street entrance with terraced slopes and seating



Community gathering space with pavilion with grills and tables



Seating options

CEDAR STREET



Playground centrally located with accessible surfacing



Mobility access and racquet sports court



Motion-activated, pedestrian-scale lighting



Inclusive swings



Slides and climbing walls on existing slopes



Trail connections to the park from Third Avenue (north & south)



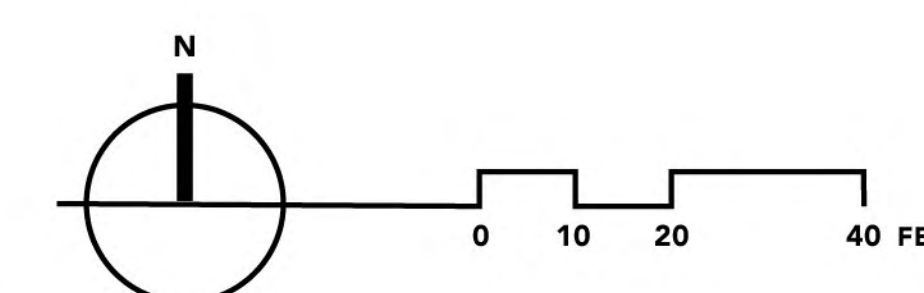
Invasive plant removal, new walking trails, and streamside reclamation of park space



New park entrance at Creighton Ave



Open field large enough for U-8 youth soccer



Facilitated by



NOVEMBER 19, 2020

Playgrounds and Community Pavilion

The vision plan upgrades the functionality of the park zones by switching the locations of the main playground and the community gathering space. The larger of two playgrounds becomes the focal point of the park, in this more visible and accessible center location. This plan positions the playground next to a new parking area and the accessible entrance from Third Avenue. This location is within view from Cedar Street and Creighton Avenue and is a safer distance from the traffic of Cedar Street.

This project would include a new play structure designed for 5-12-year-old children, a new play structure for 2-5 year-old children, a hillside slide and boulder scramble between the two play areas, new playground surfacing, new hand/guard railings, reconfiguration of sidewalks and ramps for ADA and code compliance, the demolition of steeply sloped concrete and crossies, and the removal of the dysfunctional water feature.

In the northeast corner of the park, where the playground is now located, this plan proposes a larger community pavilion surrounded by shaded areas for cookouts and gatherings. A new pavilion provides shelter for family-style tables. Alongside the pavilion is a master grill

with coal bin. Additional picnic tables and an outdoor chess table surround the pavilion within the existing walls.

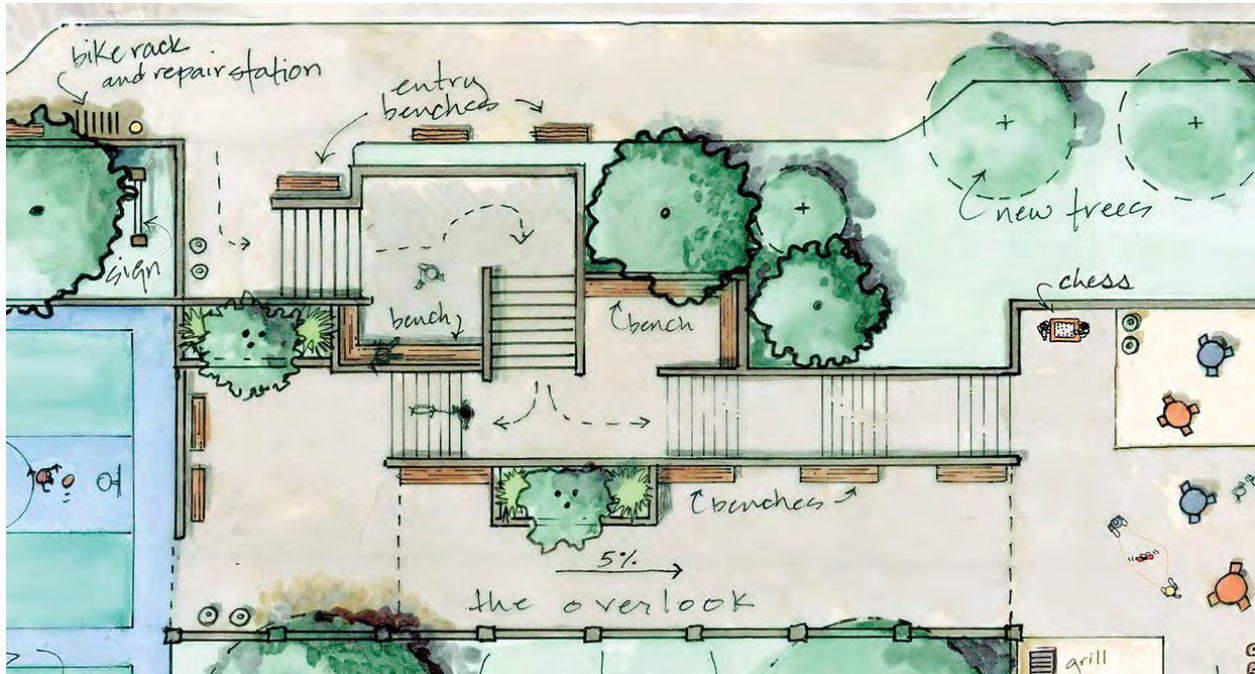
A new stair leads from the pavilion down to the playgrounds on the middle level of the park. As an alternative to the stairs, a gently sloped walkway follows the path of the existing ramp—widened and fitted with new handrails—through a woodland garden under the large existing tree. Currently the area is damp, dark, and uninviting. Recommendations include removing overgrowth and strategic thinning of the canopy, widening the ramp and creating intentional stopping points featuring shade plants, boulders, benches, bird houses and places to observe wildlife.



Below and between the two play areas, facing the view southward across the park, is a passive seating area with multiple bench swings. The swings proposed include arbors overhead for additional shade. Throughout both play areas there are benches and other seating options for care-givers.

Facing page, detail of the playgrounds and community pavilion area

This page, below, detail of Cedar Street entrance, and bottom, cross-section illustration of the entrance looking north from the park



Cedar Street entrance

Creating a safe, accessible pedestrian entrance into Cedar Park is one of the highest needs for the park’s renovation. This plan calls for the reconfiguration of the park’s main entrance from Cedar Street into a series of stairs and landings, all constructed to current building codes. This plan recommends stairs with generous landings as the main entrance into the park from Cedar Street. Because of the difference in elevation between Cedar Street and the upper level of the park, building a ramp at this location would consume most of the

street frontage and require the installation of roughly 200 feet of ramp. As an alternative, it is recommended that a fully accessible entrance be constructed off Third Avenue.

This project would include removal of the former water feature and reconstruction of the retaining wall between the (proposed) playground location and the upper level of the park. Two new canopy trees would be planted to frame the view from the entrance to the central playground, and the slope gently terraced to reduce erosion and provide a lawn area for enjoying the park.



Reclamation of land along Indian Creek

By removing invasive exotic plants and reclaiming the park land on either side of Indian Creek, the park's usable space will be increased by 1/3 its current size. This project includes removing invasive exotic plants (typically a 3-year process) and pruning and/or removal of vegetative overgrowth that impedes sightlines into the park. It also recommends stabilizing soil on slopes with new plantings or other strategies and replanting canopy trees and understory species. In the stream, the plan suggests installing boulders to create pools and riffles and prevent streambank erosion. Finally, the plan calls for a trail access point from the south segment of Third Avenue—possibly with a small bridge or boulder stepping stones crossing Indian Creek, and trail construction alongside the creek. Benches, or other seating, and signage for wayfinding and education are recommended along the trails throughout.

Open field and field house

The existing field can be improved by removing overgrowth along the edges, in the understory and shrub layer, and selectively thinning the canopy. These measures will improve sightlines into the open field and increase its usable size.

Soft-surface walking paths are planned around the perimeter of the open fields, descending the slope to the creekside trails. This series of trail has benches/swing benches in shaded points.

A small covered pavilion or “field house” on the edge of the open field serves small gatherings and shaded spectating. The structure includes built-in benches around its perimeter that look out over the field and stream. A walkway from this field house connects to the new pedestrian entrance on Creighton Avenue.

Entrance at Creighton Avenue

This plan prioritizes comfortable, safe access into the park for the entire neighborhood. An improved entrance is called for on Creighton Avenue (a cul-de-sac that terminates at the park's southern boundary). This entrance includes a park sign with hours, a park rules sign, waste receptacle at the entrance, with a sidewalk leading into the park.

Entrance at Third Avenue

At Third Avenue, a new ADA-compliant parking area and no-stair entrance is planned adjacent to the playground and courts. This parking area is designed to accommodate those with mobility needs. Other visitors should opt for on-street parking if needed, bike to the park, or enjoy a short walk to this neighborhood park. A new pedestrian trail entrance from the south end of Third Avenue will also connect to the park via the streamside trail.

Inside the park, handrails are updated to meet current code requirements and stairs and ADA-compliant ramps replace steep ramps and uneven surfaces. On the park's perimeter, all sidewalks are repaired and safe pedestrian street crossings are established leading to the park.

The placement of lighting should be considered carefully. Lights after dark signal that the park is open. Any lights installed are to be at the appropriate scale for a neighborhood park, and fitted with shields that direct light away from residences. Motion-sensing and solar-powered lighting is recommended. It is recommended that stairs are lit at foot-level for safety.

Balance of uses

One strength of Cedar Park the way it is now is that it has a balance of active and passive uses. The park is divided by use by an imaginary diagonal line with active uses in the northwest portion of the park and passive uses in the southeast portion

of the park. This plan carries through with that pattern. On the southeast side of the park is the creek, the streamside trail, open field, and woodland edge. On the northwest portion of the park are the courts, basketball and tennis, and the playgrounds. The two are linked by community spaces for gathering and relaxing.

Renovation of the basketball courts

The park will continue to offer two full basketball courts in the upper northwest corner. The courts will be resurfaced with new backboards, nets and fencing. The retaining wall and embankment between the courts and Cedar Street will be modified in a way to prevent erosion and collection of sediment on the courts. This would be investigated by an engineering study, but might include grading to divert stormwater, soil stabilization, and raising the height of the wall to protect the courts. As stormwater naturally descends the site, bioswales, rain gardens, and boulders slow and direct the flow and encourage infiltration.

Racquet sports courts

Adjacent to the Third Street entrance and parking area, there is a new racquet sports court, large enough for a doubles court or pickleball, or a multi-use arrangement. The courts are fenced and include a bench and drinking fountain beside the entrance. The walkway is ADA-compliant and lets on to the accessible picnic area overlooking the open field. Construction of this court requires the reconstruction of a retaining wall that will extend the length of the court.

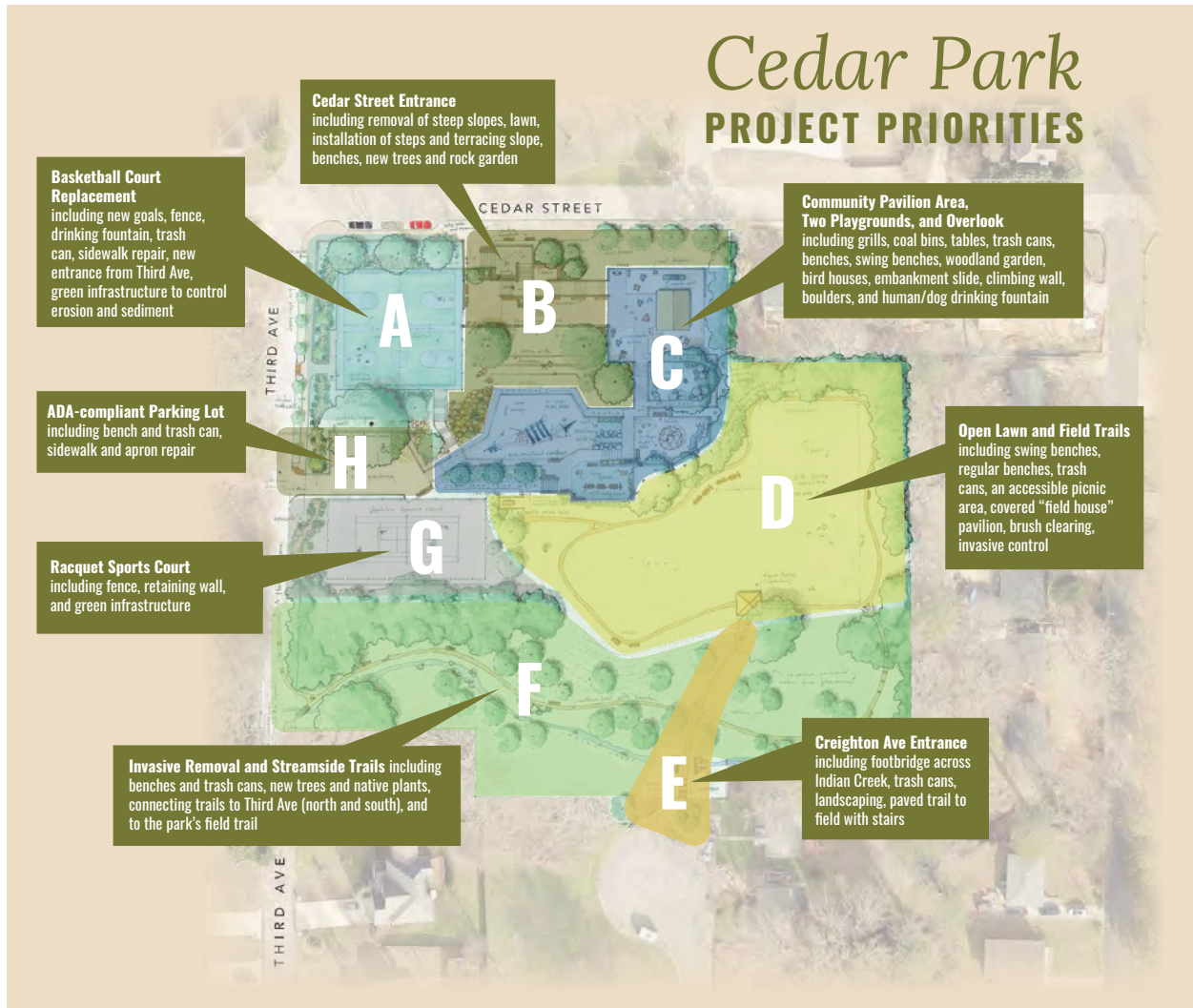
Forum for ongoing community input and park-related information, events, and local history

In addition to an existing neighborhood Facebook page, The Friends of Cedar Park group has assumed management of the website that was created by Park Pride to help facilitate the visioning process.



Above, detail of courts, new entrance, and parking off Third Avenue

At this time, the website is the primary forum for information about the park, events, and local history. Once implementation of the vision plan begins, this will become the community's notice board for updates, input, and fund raising. Recommendations for additional ways to reach the community for input and announcements are welcomed.



Item	Overall Rank	Rank Distribution	Score	No. of Rankings
C. Community pavilion area, two playgrounds, and overlook	1		206	36
F. Invasive removal and streamside trails	2		196	35
B. Cedar Street entrance	3		188	35
D. Open lawn and field trails	4		179	35
A. Basketball Court replacement	5		160	35
E. Creighton Ave entrance	6		146	36
G. Racquet sports court	7		105	35
H. ADA-compliant parking lot	8		95	35

*Facing page, top:
Description of projects, and
below, the community's
ranking of projects*

Projects & Budget

This vision plan for Cedar Park is intended to guide community-led advocacy and development of the park in a phased approach. At the final community meeting, attendees ranked projects in order of priority (see prioritization diagram on the previous page) to guide fundraising efforts and order of implementation.

The budgets presented on the following pages are intended to provide a starting point for fundraising and advocacy efforts and were compiled without the benefit of detailed design, survey, geotechnical, and other site conditions, which may change significantly the cost of any project. Park Pride makes no guarantee or warranty as to their accuracy.

It is worth noting here that Park Pride provides matching grants for community-led park improvement projects, and should be considered as a potential source of funds for community initiatives in Cedar Park.



Opinion of Probable Costs by Project (in order of priority), May 2021

COMMUNITY PAVILION AREA, TWO PLAYGROUNDS, AND OVERLOOK

Item	Unit	Qty	Cost/Unit	Extended Cost	Notes
Site prep/ESPC/Demolition	ALLOW	1	\$55,000	\$55,000	Selective removal of concrete ramps/paving, wooden slopes, and play/picnic equipment
Community pavilion	EA	1	\$75,000	\$75,000	Large pre-fab pavilion on concrete slab
Community pavilion furnishings	ALLOW	1	\$25,000	\$25,000	Includes: tables & chairs, benches, waste receptacles, coal bins, picnic tables, etc
Master grill	EA	1	\$16,000	\$16,000	Custom masonry grill with granite veneer and large prep surface
Replace paving	ALLOW	1	\$35,000	\$35,000	Allowance to replace/patch remaining concrete where damaged/degraded
Concrete steps	SF	805	\$12	\$9,660	To replace steep ramps
Stone wall reconfigure	SF	990	\$80	\$79,200	Masonry wall with granite veneer & cap, avg height 3' above grade
Site drainage	ALLOW	1	\$15,000	\$15,000	Allowance for inlets, pipes, trenching & connections
Play equipment	ALLOW	1	\$250,000	\$250,000	
Safety surfacing	SF	4,500	\$25	\$112,500	Bonded rubber playground surfacing
Swing benches	EA	3	\$3,500	\$10,500	
Playground furnishings	ALLOW	1	\$25,000	\$25,000	Includes: benches, waste receptacles, drinking fountain, dog poo bags
Landscape/signage	ALLOW	1	\$25,000	\$25,000	
Design & Engineering	15%			\$109,929	Plan to spend 15% of total budget in design & engineering fees
Contingency	20%			\$146,572	Plan for a contingency budget of 20%
TOTAL				\$989,361	

INVASIVE PLANT REMOVAL, STREAMSIDE STABILIZATION, AND STREAMSIDE TRAILS

Item	Unit	Qty	Cost/Unit	Extended Cost	Notes
Invasive removal	AC	1.5	\$5,000	\$7,500	
Restore turf/stabilize	MSF	65.0	\$60	\$3,900	seed/straw on slope with tractor spreader
Walking trail (creekside)	LF	680	\$7	\$4,760	natural surface walking trail
Walking trail connection (Third Ave)	LF	200	\$10	\$2,000	higher sf cost to account for steep slopes and incorporation of stairs
Landscape/beautification	ALLOW	1	\$15,000	\$15,000	
Tree planting	EA	25	\$700	\$17,500	
Design & Engineering	15%			\$7,599	Plan to spend 15% of total budget in design & engineering fees
Contingency	20%	2	\$75.00	\$10,132	Plan for a contingency budget of 20%
ADA-accessible path	LF	420	\$30.75	\$12,915	Assume 5' width concrete sidewalk
ADA Railing	LF	33	\$99.00	\$3,267	Steel pipe railing, 3 rail, galvanized 1-1/4" dia.
Design & Engineering	Percent	20%		\$13,280	Expect to pay between 15-20% of projected project costs
Contingency (15%)	Percent	15%		\$9,960	
TOTAL				\$68,391	

CEDAR STREET ENTRANCE

Item	Unit	Qty	Cost/Unit	Extended Cost	Notes
Site prep/ESPC/Demolition	ALLOW	1	\$30,000	\$30,000	
Grading	ALLOW	1	\$30,000	\$30,000	May require soil import to create terraces
New concrete paving (includes steps)	SF	7,500	\$7	\$52,500	4" gray concrete paving, 3500 psi
New granite walls to create terraces	SF	1,400	\$80	\$112,000	Masonry wall with granite veneer & cap, avg height 4' above grade
New granite wall along proposed "overlook"	SF	220	\$80	\$17,600	Masonry wall with granite veneer & cap, avg height 24" above grade
Metal handrails along stairs	LF	150	\$67	\$10,050	Galvanized steel pipe rail on stairs, 1.5" diameter

CEDAR STREET ENTRANCE, CONTINUED

Item	Unit	Qty	Cost/Unit	Extended Cost	Notes
Terracing	SF	200	\$80	\$16,000	Masonry wall with granite veneer & cap, avg height 24" above grade
Armor slope with boulders/plantings	ALLOW	1	\$8,500	\$8,500	Allowance to stabilize slope
Site drainage	ALLOW	1	\$15,000	\$15,000	Allowance for inlets, pipes, trenching & connections
Waste receptacles	EA	4	\$2,500	\$10,000	Victor Staley model, mounted on concrete pad
Benches	EA	10	\$2,500	\$25,000	Victor Staley model, mounted on concrete pad
Bicycle racks	EA	5	\$300	\$1,500	Inverted "U" shape
Landscape/signage	ALLOW	1	\$25,000	\$25,000	
Design & Engineering	15%			\$52,973	Plan to spend 15% of total budget in design & eng. fees
Contingency	20%			\$70,630	Plan for a contingency budget of 20%
TOTAL				\$476,753	

OPEN LAWN AND FIELD TRAILS

Item	Unit	Qty	Cost/Unit	Extended Cost	Notes
Site prep/ESPC/Demo	ALLOW	1	\$8,000	\$8,000	
ADA picnic pad	EA	1	\$12,000	\$12,000	Includes level surface with furnishings
Field house pavilion	EA	1	\$30,000	\$30,000	Prefab structure on concrete slab
Swing benches	EA	4	\$3,500	\$14,000	
Walking loop trail	LF	775	\$7	\$5,425	natural surface walking trail
Site furnishings	EA	5	\$2,500	\$12,500	Benches and at least one waste receptacle
Restore turf/stabilize	ALLOW	1	\$5,000	\$5,000	
Design & Engineering	15%			\$13,039	Plan to spend 15% of total budget in design & eng. fees
Contingency	20%	1		\$17,385	Plan for a contingency budget of 20%
TOTAL				\$117,349	

BASKETBALL COURT RESTORATION

Item	Unit	Qty	Cost/Unit	Extended Cost	Notes
Resurface/restripe courts	EA	2	\$7,500	\$15,000	Resurface/restore courts. Replace hoops/backstops as needed
Repair drinking fountain	EA	1	\$2,500	\$2,500	
Reconfigure paved pedestrian entrance	ALLOW	1	\$25,000	\$25,000	Demolish steep paved entrance in favor of an ADA-compliant walk from existing sidewalk. Recommend 25' extension of granite wall to discourage "cut-through" traffic on steep slopes that can lead to erosion issues
New waste receptacles	EA	2	\$2,500	\$5,000	Victor Staley model, mounted on concrete pad
Erosion control	ALLOW	1	\$15,000	\$15,000	Earthwork, trenching, engineered soils, boulders, etc., to provide a long-term solution to persistent sedimentation of the basketball courts from stormwater runoff. Recommend engaging civil engineer. May require removal of nearby trees to accomplish a solution.
Design & Engineering	15%			\$9,375	Plan to spend 15% of total budget in design & eng. fees
Contingency	20%			\$12,500	Plan for a contingency budget of 20%
TOTAL				\$84,375	

CREIGHTON AVENUE ENTRANCE

Item	Unit	Qty	Cost/Unit	Extended Cost	Notes
Paved entry plaza at Creighton Street with ADA ramp	EA	1	\$15,000	\$15,000	Includes paved entry, ramp with detectible warning domes, signs, bench, waste receptacle
Paved path to field	SF	1,080	\$8	\$8,640	Use existing culvert crossing. Pave with concrete
Landscape/beautification	ALLOW	1	\$10,000	\$10,000	
Design & Engineering	15%			\$5,046	Plan to spend 15% of total budget in design & eng. fees
Contingency	20%			\$6,728	Plan for a contingency budget of 20%
TOTAL				\$45,414	

RACQUET SPORTS COURT					
Item	Unit	Qty	Cost/Unit	Extended Cost	Notes
Site prep/ESPC/Demo	ALLOW	1	\$12,000	\$12,000	
Complete court with asphaltic surface, fence, net, etc	ALLOW	1	\$60,000	\$60,000	
Replace retaining wall	ALLOW	1	\$50,000	\$50,000	
Design & Engineering	15%			\$18,300	Plan to spend 15% of total budget in design & engineering fees
Contingency	20%			\$24,400	Plan for a contingency budget of 20%
TOTAL				\$164,700	

ADA-COMPLIANT PARKING LOT					
Item	Unit	Qty	Cost/Unit	Extended Cost	Notes
Site prep/ESPC/Demo	ALLOW	1	\$25,000	\$25,000	
Repair sidewalk and apron	ALLOW	1	\$15,000	\$15,000	
Repave and stripe	EA	1	\$12,950	\$12,950	Four spaces, one ADA
Site furnishings	EA	3	\$2,500	\$7,500	two benches and a waste receptacle
Signage/bollards	ALLOW	1	\$10,000	\$10,000	
Design & Engineering	15%			\$10,568	Plan to spend 15% of total budget in design & engineering fees
Contingency	20%			\$14,090	Plan for a contingency budget of 20%
TOTAL				\$95,108	

GRAND TOTAL				\$2,041,450	
--------------------	--	--	--	--------------------	--

Appendix A

COMMUNITY SURVEY DATA

Note: Any identifying information of respondents has been redacted

Report for Cedar Park Visioning Survey

Response Counts

Completion Rate:	100%		
Complete			118

Totals: 118

1. What is your favorite thing about Cedar Park the way it is today?



ResponseID	Response
2	The open space thats available for potential use
3	just having the park space
4	The dogwood trees.
5	Large, layers, middle of the community
6	Playground
7	Location.
8	The large playground!
9	Proximity and walkability from our house. Diversity of the people who use the park.
10	The playground equipment. It needs to be updated, but my kids love having a space to slide and play.
11	Location, location, location! Super walkable from our home on 1st.
12	Nothing
13	Open space
15	Space for community gatherings of young people from the neighborhood, especially for the historic community members.

ResponseID	Response
16	It is in the neighborhood
17	I did not even know there was a park there even though it is only 3 minutes from me.
18	Location
19	The basketball courts
20	It's small but the space is used well.
21	It is a park that is completely surrounded by the community with interests for all walks of life.
22	Location
23	The size of the playground areas, shade cover,
24	Different areas for different activities
25	I like the terraces, and how it fits the natural topography of the area.
26	It is close to the house.
27	It is close to the house.
28	The proximity to my home.
29	It's very clean and nice equipment
30	Proximity to the neighborhood.
31	Big space, the trees, very quiet and the big open space next to the creek.
32	Park is walkable from my house. It will be great park in future (after changes that needs to be made).
33	The trees
34	The location/ convenience
35	It is always clean
37	Nice playground
38	Playground areas

ResponseID	Response
39	Size is nice
40	The playground and the green area space
41	The nice, open field.
43	no more hookers and drug dealers
44	Multiple levels
45	Location
46	I love how large it is and how conducive to multiple uses.
47	Shady, paved areas, kid equipment
48	How close it is to our house.
49	Location
50	The trees and green space near the bottom of the park.
51	Basketball courts and the memorial Lamont (please don't take it away)
52	I love that we have a neighborhood park with a playground and basketball courts.
53	The big trees provide tons of shaded areas.
54	The playground and basketball courts.
55	I love it's cozy feel. It's been a place to come together in the neighborhood for many years.
56	I like it because all the neighborhood kids play together and I like to see the young guys being healthy playing basketball..... before coronavirus that is.
57	Convenient location and space to walk my dog
59	Nothing. I have not gone to the park.
60	It's close by, the trees and shade.
61	I love that it feels private and natural. I also like that it's tiered.
62	It's close to our house.

ResponseID	Response
63	The open field.
64	Green open space
65	It's proximity to my house
66	Basketball courts and playground equipment
67	I like the basketball courts and the different play areas. I like that it has shaded areas and places to sit.
68	The trees.
69	I like seeing all the kids and families using the park.
71	Size and location
72	Having a nice park within walking distance of my home.
74	The playground is nice.
75	Location
76	Just buying a house near the park and it looks like it could use a serious face lift
77	Close to my house. I like the bottom of the parks grass area, but it's hard to get to and often overgrown.
79	Closeness to the neighborhood, small feel, not a 'destination park' with overly high attendance
80	Although rims and nets have been down, my favorite thing about Cedar Park are the basketball courts. I also like the play spaces for my daughter, and being there as a family.
81	Basketball courts and play space for my toddler.
82	Neighborhood accessibility.
83	Not so much
85	The OPEN FIELD for calm, multipurpose use and natural preservation! Less human destruction of nature!
86	It is wonderful to have a park in the neighborhood. I like the size & versatility of the space.

ResponseID	Response
87	Easy move around area.
89	Trees and open space.
90	How close it is to our house.
92	A lot of space
93	My favorite thing today is Cedar Park's proximity to the neighborhood, it's an untapped jewel of a park just waiting to be invigorated!
94	It's close and in the neighborhood.
95	Great space for different uses. Great canopy trees to provide shade.
96	very clean, always quiet
97	The curly slide.
98	This the closest park to my home
99	The playground the the kids, a place to bbq...and watch the kuds play, the basketball court...the park itself...
100	Location
101	Playground
103	The open and flat grassy field mid-way through the park, and the large trees.
104	That there is a field that allows patrons and their pets the opportunity to run, jump, and experience unencumbered land away from the picnic area, jungle gyms and basketball courts.
105	The openness for my dogs to run, jump and play unencumbered away from jungle gyms, picnic area and basketball courts.
106	The swirly slide.
107	That we have a neighborhood park close by
108	Lots of trees
109	The proximity to so many families!
110	The trees, playground, and basketball courts

ResponseID Response

111	It's down the street, it has huge potential!
112	The multiple levels and the space to accommodate many different interests
113	Potential
114	The potential to have a nice park in walking distance
115	The tire swing
117	playground
118	Proximity to my home
119	Great size for the neighborhood, trees, playground, and basketball courts.

2. What are the biggest challenges you face or concerns you have when you go to Cedar Park?



ResponseID	Response
2	No accessories in the park
3	parking, hills, direct access from rockbridge rd side (bridge / path into park grown over). updated playground and basketball courts.
4	Everything appears to be pretty run down.
5	Children's equipment is old and rundown
6	People using drugs and crime
8	The steep path down to the playground. It's very difficult juggling a stroller, kids, and a dog. Also the cleanliness has been a concern in the past.
9	Needs serious updating and maintenance. Don't feel it's adequately safe for young kids.
10	Outdated equipment.
11	Safety and upkeep. The Path isn't particularly well lit on the way over, and then the park itself is not very well kept up.
12	Doesn't have tennis or pickleball and seems unsafe
13	Traffic speed down Cedar, lack of lights, and the walkway angles causing risk while walking on the walkway ways

ResponseID Response

14	No lighting at night. Overgrowth of poison ivy at the Perimeter
15	Cedar street is dangerous. The northeast corner of the park has (1) park entrance, (2) school bus stop, and (3) MARTA bus stop. People fly down Cedar street. We need a 4-way stop at the intersection of Cedar Street and Third Avenue. Our neighborhood is losing canopy very quickly. Please preserve remaining large trees. There were red-headed woodpeckers nesting in the park, but I haven't seen them since the large tree removals. I regularly see hawks and owls that depend on park canopy for habitat.
16	Sitting area with tables
17	Safety is my concern at any park.
18	Overall appearance. It's a great size but has too much concrete
19	Safety.
20	Moving through the different levels is either unsafe, if you use the steep ramps, or slow if yuh use the handicap ramps. No lights at night makes it unsafe.
21	The park is only accessible through Cedar Street, so the community on the North side of the park (Creighton Ave.) has to walk or drive quite a distance to enjoy the park.
22	Mosquitoes, steep walkway into park, equipment needs to be power washed
23	The entry to the park from Cedar is a bit dangerous for toddlers with all the cement and hilly landscape.
25	I walk through or by it nearly every morning, and I have never had a challenge or concern
26	The park itself is run down and difficult to move around in.
27	The park itself is run down and difficult to move around in.
28	My concerns are the amount of trash I see on the ground and the concrete is not attractive or inviting. It seems very shaded and too concealed. In the summer months, it seems too marsh-like to visit.
29	When you go down the hill there's a large grassy area that gets very dark and sometimes people will hang out there at night so it can feel kind of dangerous
30	It's not attractive enough to lure me over there.

ResponseID	Response
31	The playground is pretty old.
32	The biggest concern for me is safety. As of right now I wouldn't even dare to go alone. There are individuals that hang out there and smoke.
33	I hope someone will remove invasive species from park
34	It doesn't look safe or appealing.
35	Dog owners not cleaning up after themselves and not having dogs on leashes.
37	With the way it slopes down, I sometimes have difficulty walking down the steep incline.
38	Elevation changes, broken sidewalks throughout.
39	Safety concerns-shooting in the past
41	Safety. To get to Cedar Park, I have to cross a busy road. And then there's the history of murders.
43	safety
44	Too much concrete
45	Not inviting, little playground equipment, feels unsafe
46	No lights after dark, the play structures are old and worn
47	Mosquitos, step entry
48	Bugs, cleanliness, quality of playground equipment.
49	Safety
50	the layout-getting into the park is hard because of the steep incline.
51	The grassy area on the lowest level below the tire swing
52	The current amenities are heavily used, but could really use an update and repairs.
53	There is a lot of broken glass. I usually go there to walk the world's most adorable dog, and I worry that he could cut his perfect little paws on broken glass, or ingest something dangerous.

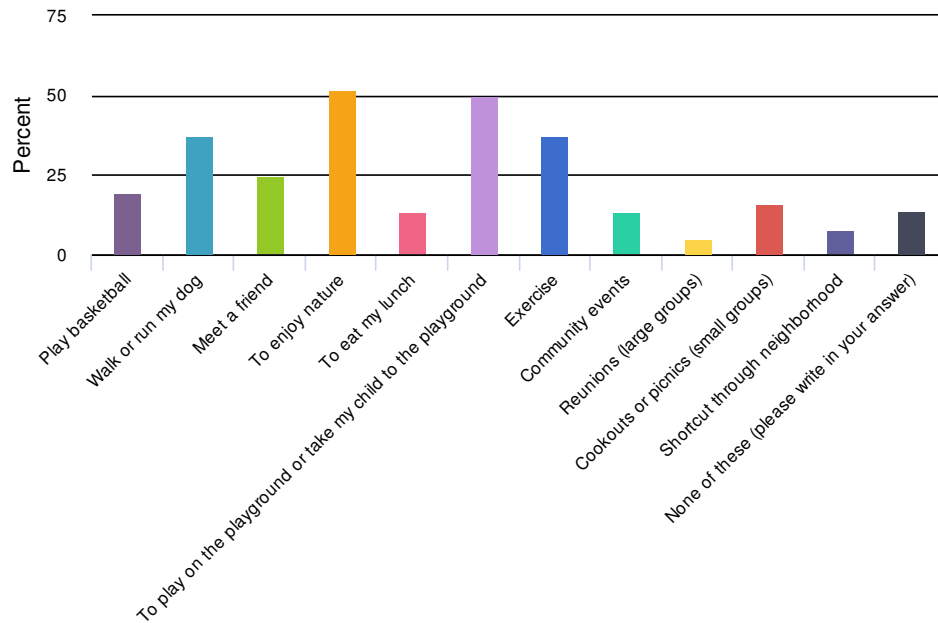
ResponseID	Response
54	The age of the playground
55	None
56	I think it needs better/updated playground equipment for the little kids and the basketball courts need to be re-done.
57	Very run down
59	It doesnt necessarily seem welcome or pet friendly
61	The steepness of the ramps. I take my grandkids and typically worried about them and of course they love to walk on that high wall that makes me very nervous. Lol
62	No places for very small children to play. Limited access.
63	Runoff and erosion.
64	Safety and security
65	The steep walkways seem a bit dangerous. The basketball courts are in bad shape. Would love an off leash dog park!
66	Not feeling safe on equipment and no age appropriate equipment for my children
67	There needs to be access from Creighton St. The overall look is dated. No concerns other than appearance.
68	The aging equipment.
69	Concerned that ppl are selling drugs and not actually utilizing the park resources. We do not have a police presence & many ppl speed on Cedar. It would be great if we had a traffic island to slow down car drivers in front of the park.
71	Safety, upkeep of equipment
72	Mosquitos
73	Safety
74	Litter is sometimes an issue.
75	Safety

ResponseID Response

76	Personal security
77	The pavement is very steep and sometimes slippery when wet. They are very dangerous. Trash that my dog tries to eat. Wish there was an enclosed area my dog could run around.
79	weeds growing into park making it unsafe to throw ball for dog (poison ivy) People parking on the sidewalk when using basketball court
80	Seems to be a little outdated compared to other parks.
81	Better upkeep would be nice, seems like it could be a really fantastic space.
82	Park needs basic updates so there is something for everyone. There is a lot of paved area and not much green space.
83	Lighting and security
84	Moving past its sketchy history.
85	Upgrades to a rubberized foundation for playground, one shelter, resurface basketball court, overgrown at creek, trash receptacles, use second basketball court as fenced dog area
86	It doesn't seem to be used much when it has such potential to be a community building space.
87	Take some of the concrete out.
89	Kudzu
90	Crossing dangerous Cedar St to get there; outdated play equipment; bugs
92	Could be dangerous for kids
93	The fact that it's not as enticing as it could be. We need to beautify the park by adding native plants and other features like benches along walking trails. These amenities would attract neighbors to stop and enjoy the quiet of nature.
94	Safety and accessibility.
95	Cleanliness and lighting.
96	dogs and owners not cleaning up behind themselves
97	Going on the bouncy bridge on the playground.

ResponseID	Response
98	I rarely visit any parks, to be honest, i have never visited Cedar Park
101	We would love to see an updated playground with handicap accessible equipment.
102	Parking
103	The is no good connectivity with the neighborhood to the south of the park. There needs to be a bridge over the creek and a paved path to connect the park with Creighton, and there needs to be a footpath from the park to the portion of Third that connects with Rockbridge.
104	Keeping children/pets away from trash and hazardous materials that have been discarded and not promptly dealt with.
105	Keeping children/pets away from trash and debris that has been thrown away, put not properly discarded.
107	Mosquitoes, park maintenance
108	Walkable accessibility
109	I wish there was access from the south side of the park (3rd Avenue side) and it seems like the park equipment is pretty old and in rough shape. Definitely better lighting & an update would make a world of difference. There are a ton of kids moving into the neighborhood now (ours included) and I think Cedar Park could be a really incredible resource.
110	Access- not an accessible way to get there for even able-bodied people and garbage collection
111	It needs a new playground, improved aesthetics with plants, more traffic
112	[Need] to renovate and update
113	Incline
114	The gradient of the land and lack of parking, size of park (very small)
116	Too hilly and not enough sitting places that are comfortable. It is difficult to access from Third Ave, Ohm and First Ave.
117	cleanliness and safety for younger children
118	Poorly lit, not well maintained, limited recreational opportunities
119	It is difficult to access with a stroller due to the steep slope. While the existing playground is nice, it is pretty limited in terms of activities (it is primarily slides).

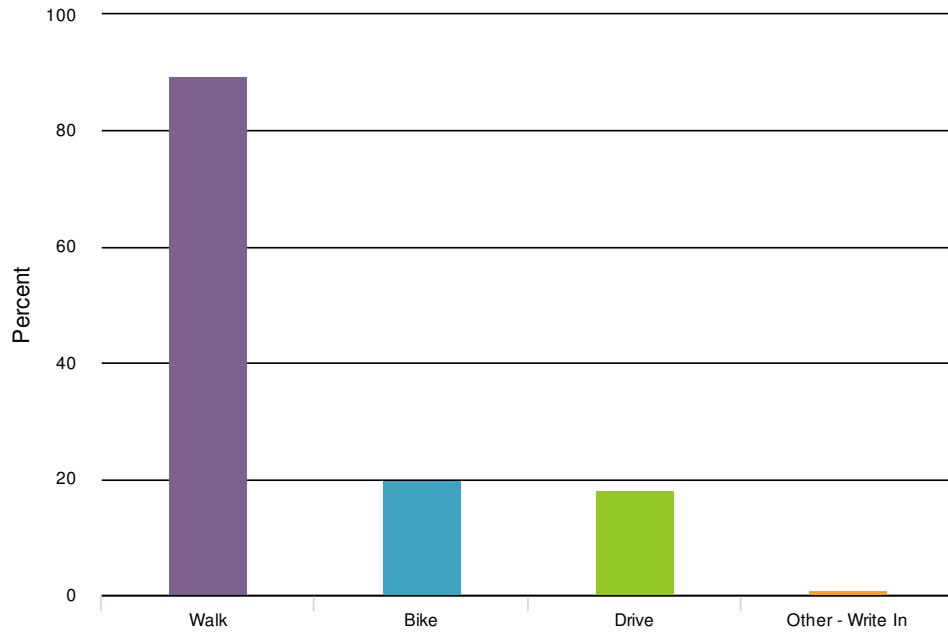
3. Why do you visit Cedar Park today? (select all that apply)



Value	Percent	Responses
Play basketball	19.3%	22
Walk or run my dog	37.7%	43
Meet a friend	24.6%	28
To enjoy nature	51.8%	59
To eat my lunch	13.2%	15
To play on the playground or take my child to the playground	50.0%	57
Exercise	37.7%	43
Community events	13.2%	15
Reunions (large groups)	5.3%	6
Cookouts or picnics (small groups)	15.8%	18
Shortcut through neighborhood	7.9%	9
None of these (please write in your answer)	14.0%	16

None of these (please write in your answer)	Count
I currently do not visit because of the park's condition. I would like to visit.	1
I currently dont visit the park	1
I don't	1
I don't go to Cedar Park	1
I don't visit it at this time.	1
I don't visit. I drive by.	1
I play tennis and pickleball in Avondale due to no courts at cedar.	1
I see it from my back deck and front porch	1
I usually walk or drive by & don't engage with it very much.	1
I'm hoping it gets some upgrades	1
Rarely go to the park	1
See above	1
To be happy	1
To let kid scooter and rollerblade on concrete	1
not any where to sit	1
Totals	15

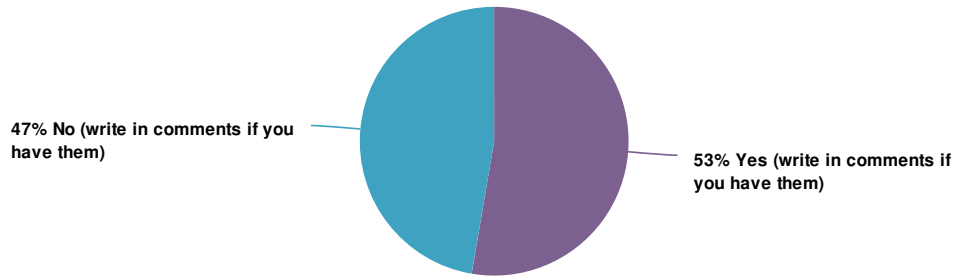
4. How do you get to Cedar Park? (select all that apply)



Value	Percent	Responses
Walk	89.6%	103
Bike	20.0%	23
Drive	18.3%	21
Other - Write In	0.9%	1

Other - Write In	Count
See above	1
Totals	1

5. Should Cedar Park have an off-leash dog park?



Value	Percent	Responses
Yes (write in comments if you have them)	52.7%	58
No (write in comments if you have them)	47.3%	52

Totals: 110

Yes (write in comments if you have them)	Count
I have multiple dogs.	2
100% agreement with this potential plan. Many in the neighborhood have dogs and a safe communal area to walk and play with our dogs would be greatly appreciated.	1
ABSOLUTELY, lack of sidewalks or green space to throw ball for dogs makes it very tough to exercise my young dog.	1
Absolutely!! I would love that!! We don't have a dances in yard so to have a place for my dog to run and play and meet other dogs close to my home would be wonderful.	1
As long as it fenced.	1
But I would be concerned about Safety and hope the space would be enclosed.	1
Totals	33

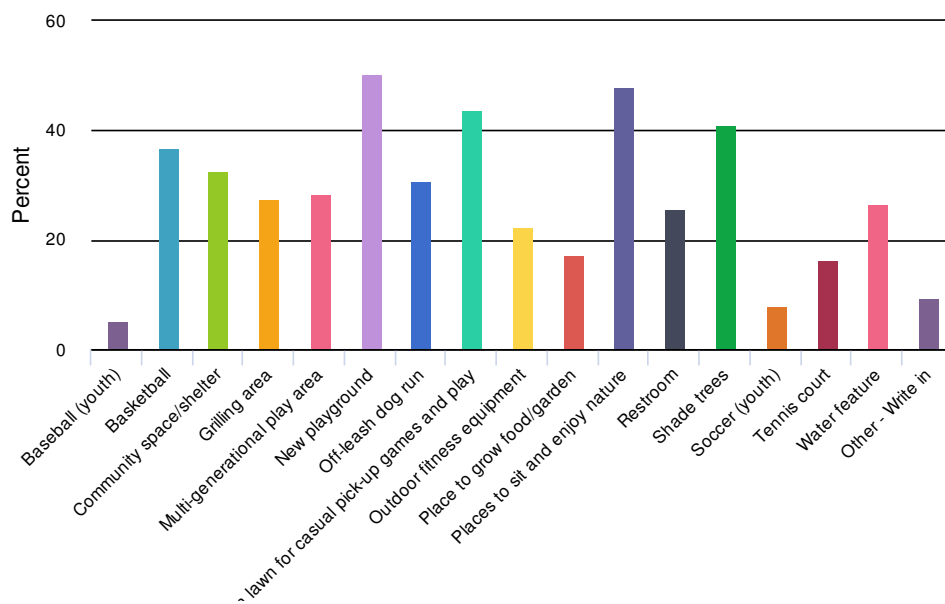
Yes (write in comments if you have them)	Count
But not at the cost of losing all green space	1
Dog parks are generally well used in communities that have them and a big asset.	1
I'd love to have one for my dog	1
I'm neutral here as I think we wouldn't necessarily use it but neighbors may benefit.	1
If it is maintained	1
If possible. Not highest priority	1
Just ensure that it's closed off for safety of kids, but I think it would be great for neighbors with pups.	1
Need a fenced in area	1
One for small dogs and one for bigger dogs. it must have seating areas for owners	1
Only if it doesn't interfere with flat grassy play area	1
Small	1
Small dog and big dog	1
The Scottsdale Dog Park is nice, but too far away.	1
There are a number of dogs in the neighborhood and it would be nice for them to play off leash	1
There is so much unused space in this park. I think there would be room for a dog park .	1
This would be a huge asset	1
This would be the best addition to the park! It increases usability for so many and promotes community!	1
We desperately need a good dog park in the area	1
We have dogs (and many of our neighbors do as well) and would go daily if we have off leash dog park available that is walkable distance. Not those that we have to cross several busy intersection, don't feel safe to walk dogs there.	1
Would be nice, but not necessary	1
Totals	33

Yes (write in comments if you have them)	Count
Would love a space to let dogs run! This is probably my #1 in addition to keeping a large playground.	1
Would need to have proper drainage and materials to avoid a mud pit.	1
YES!	1
Yes but I would not want to lose the entire lawn - need a place for concerts, gatherings, soccer, pickup games	1
and poo poo bags	1
there is space for dog park and it would be a good space for frisbee golf	1
Totals	33
No (write in comments if you have them)	Count
All parks are not dog parks.	1
Brookside dog park is less than a mile away. It seems superfluous	1
Concern over cleanliness and safety to children.	1
Could lead to too many incidents.	1
I don't think this is safe for children. Not all dog owners are created equally.	1
I love dogs, but don't love dog parks. I also feel like there is one nearby and everyone in the area has yards.	1
I think it's important to preserve what the neighborhood has and it's own history	1
I'm a dog owner, and I wouldn't let me dog run free with other dogs	1
It could potentially be dangerous. An unleashed dog could think my sweet angel baby is a snack	1
It is not enough space	1
It seems like over-kill considering Brookside is so close	1
My concern with a dog park is who will be responsible for reinforcing the rules? Will there be a separate small/big dog areas? What happens if it gets very dirty with mud, holes, and dog feces?	1
Totals	34

No (write in comments if you have them)	Count
No off leash pets. Insurance issue if injury with kids!	1
No, because it takes away from the other aspects.	1
Not every green space needs to center dogs. I love dogs, but plenty of people, including children, do not. There are already enough spaces to exercise pets in the area.	1
People don't clean up after their dogs in the neighborhood, and i don't trust them to clean up after then in a park	1
That's nuts.	1
The focus should be on space for kids/people	1
There are already plenty of places to walk dogs in the neighborhood.	1
There are plenty of dog parks. Cedar park is small and the focus should stay on making the park better for human children and youths.	1
There is a dog park about a mile away in Brookside. Cedar Park is too small to dedicate space to dogs.	1
There is another dog park less than a mile from here. I am a dog lover and I love for my dogs to be able to run, but dog parks are a liability and downright dangerous. People don't clean up after their dogs, they don't pay attention to them, fights inevitably happen, and dogs and their people end up with injuries. Most dogs don't even enjoy dog parks.	1
There's already an off leash dog park at brookside. This park should keep space that can be used for the entire community and not just for dog owners.	1
There's one just around the corner.	1
Too much liability. People are irresponsible.	1
Too small and could endanger shrubs, any plantings.	1
Unless it's fenced and away from the kiddos.	1
We cater to dog lovers enough as it is. This city (meaning metro ATL in general) severely lacks park space for humans, especially kids, and especially kids from underprivileged backgrounds (which we have many of in this area).	1
We have enough dog parks and the hazards are not worth the effort.	1
Totals	34

No (write in comments if you have them)	Count
Yes	1
Yes, I have a dog.	1
not all dogs behave	1
owners are not responsible enough	1
park is too small	1
Totals	34

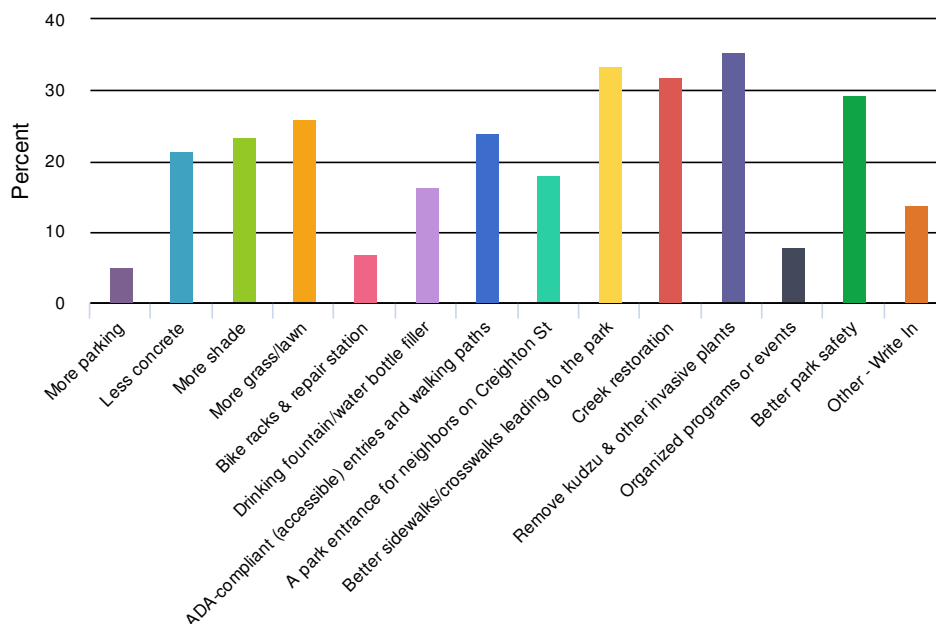
6. What are the top five amenities you would like to see added or improved in Cedar Park? (Select a maximum of five)



Value	Percent	Responses
Baseball (youth)	5.1%	6
Basketball	36.8%	43
Community space/shelter	32.5%	38
Grilling area	27.4%	32
Multi-generational play area	28.2%	33
New playground	50.4%	59
Off-leash dog run	30.8%	36
Open lawn for casual pick-up games and play	43.6%	51
Outdoor fitness equipment	22.2%	26
Place to grow food/garden	17.1%	20
Places to sit and enjoy nature	47.9%	56
Restroom	25.6%	30
Shade trees	41.0%	48
Soccer (youth)	7.7%	9
Tennis court	16.2%	19
Water feature	26.5%	31
Other - Write in	9.4%	11

Other - Write in	Count
Splash pad	3
Native flowers and shrubs that attract pollinators and enhance the area	2
More children centered spaces	1
Pickleball	1
Small (safe and traffic free) beginner area for roller skaters/skateboarders.	1
Walking Trails	1
Walking path	1
pool	1
Totals	11

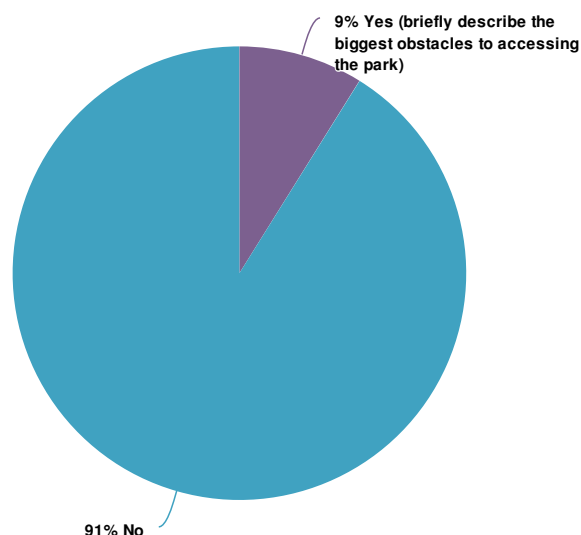
7. Select the top three conditions that would make you more likely to visit Cedar Park. (Select a maximum of three)



Value	Percent	Responses
More parking	5.2%	6
Less concrete	21.6%	25
More shade	23.3%	27
More grass/lawn	25.9%	30
Bike racks & repair station	6.9%	8
Drinking fountain/water bottle filler	16.4%	19
ADA-compliant (accessible) entries and walking paths	24.1%	28
A park entrance for neighbors on Creighton St	18.1%	21
Better sidewalks/crosswalks leading to the park	33.6%	39
Creek restoration	31.9%	37
Remove kudzu & other invasive plants	35.3%	41
Organized programs or events	7.8%	9
Better park safety	29.3%	34
Other - Write In	13.8%	16

Other - Write In	Count
Dog run for socializing my dogs	2
Flowers, beautification	2
Access or a trail from 3rd Ave On the Rockbridge side.	1
Beauty, safety, nice seating.	1
Better playground and not down a steep ramp	1
Better playground equipment.	1
Cleaner and better lit	1
Dog park	1
More dedicated space for children	1
More grass, better entries & walking paths	1
Park entrance on 3rd Ave	1
Upgraded playground equipment	1
bathroom	1
wide walking paths	1
Totals	16

8. Does anyone in your household have mobility issues that prevent them from enjoying the park?

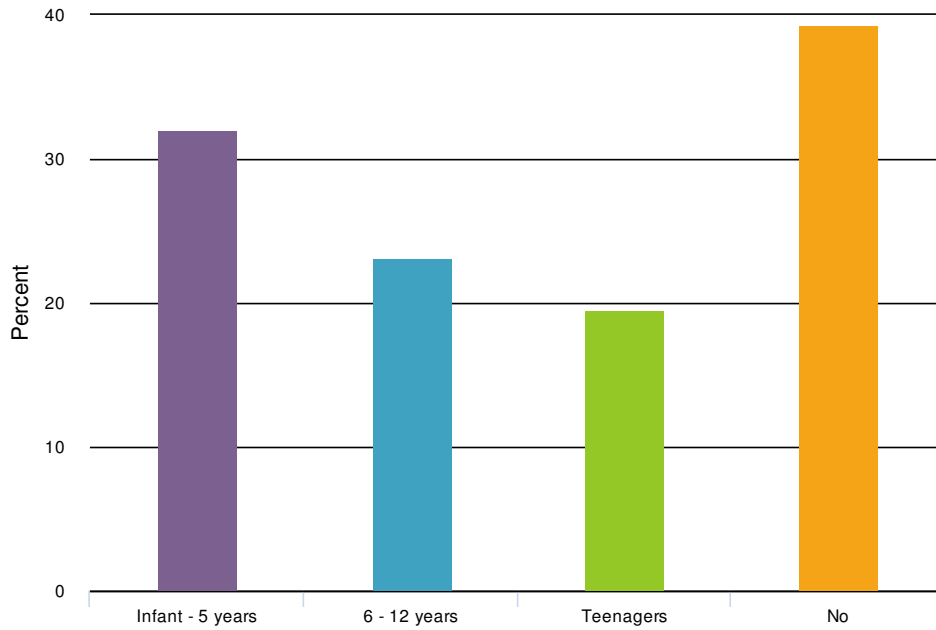






Value	Percent	Responses
Yes (briefly describe the biggest obstacles to accessing the park)	8.9%	10
No	91.1%	102

Totals: 112

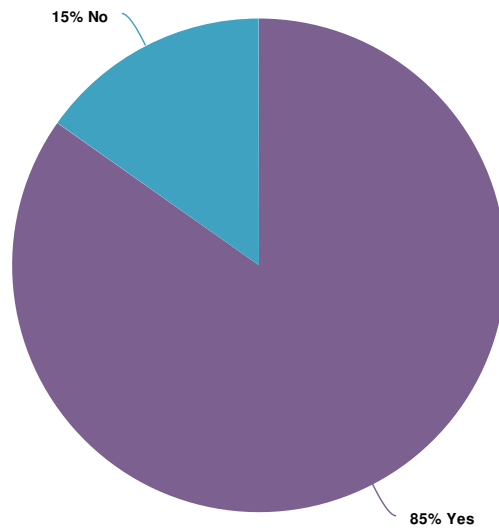
Yes (briefly describe the biggest obstacles to accessing the park)	Count
I personally do not have mobility issues however I have family members that I would like to be included in on park excursions that cannot access the park because of the steepness.	1
May need a wheelchair at times. Often use a cane.	1
My mother has back and walking issues when going down the slopes.	1
Need better wheelchair access.	1
Needs to be universally designed, does not currently comply with ADA standards.	1
We have aging parents that visit often. we currently cannot take them to the park because of the hills.	1
When my mom visits, she is wheelchair bound and visiting the park would be a challenge	1
Yes I have bad knees and the steep hill is rough on me walking.	1
not easy for handicap chair.	1
walking on hills and uneven paths as well as need to rest after a smaller distance	1
Totals	10

9. Does your household include children (or children who visit)?
Please select all the ages that apply below.



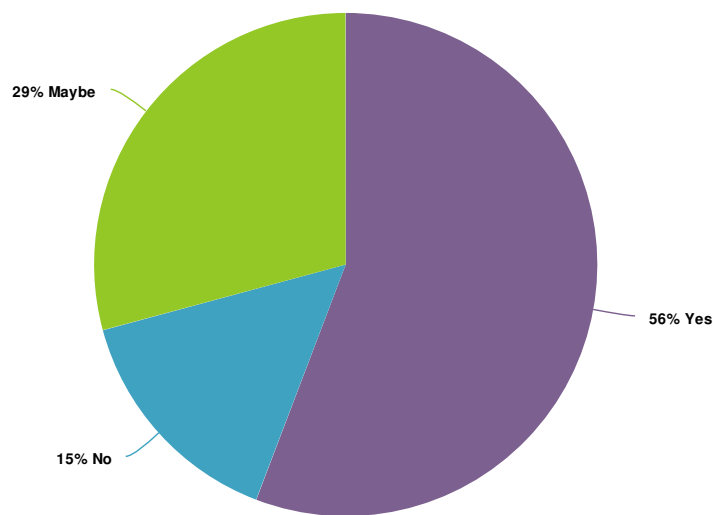
Value		Percent	Responses
Infant - 5 years		32.1%	36
6 - 12 years		23.2%	26
Teenagers		19.6%	22
No		39.3%	44

10. In general, would you be willing to volunteer for park clean-up days?



Value	Percent	Responses
Yes	84.8%	95
No	15.2%	17
Totals: 112		

11. Are you interested in joining the Friends of Cedar Park?



Value	Percent	Responses
Yes	55.8%	63
No	15.0%	17
Maybe	29.2%	33
Totals: 113		

12. Is there anything else you'd like us to know about Cedar Park? Feel free to give more detail on an earlier question or address an issue that we haven't asked about.



ResponseID Response

2	Basketball court should be limited to one court.
5	We wish we could use the park more and we plan on using it after renovations.
8	Re: top 5 things you'd like to see... Playground does not need to be new but want to keep existing one. I love the idea of a pool or tennis court, something to compete with Avondale amenities, but understand the space is tight as I'm sure the budget is also. Because of this my #1 is to keep the playground followed by adding a dog park. It would be nice to re-do the basketball courts for appearance sake but my family probably would not use it. I worry that adding a restroom would promote loitering or smoking in them.
9	Na
10	Some sort of fencing around the lawn before you get to the creek would be nice.
13	The area has amazing potential which can be enjoyed by many with a specific improvements (i.e. less step walkways for the mobile challenged, add drinking water options for visitors, updated recreational spaces such as the basketball courts). I look forward to seeing the vision of all melting into a reality.

ResponseID Response

21	(Prior to the pandemic) I could hear the sounds of children playing at the playing at Cedar Park from my house on Rockbridge Rd. But access to the park is so limited that I rarely ventured the 10-15 minute walk to get there. I believe that adding an access point at Creighton Ave. is critical for the surrounding neighborhoods to enjoy the park.
23	It would be good to have a doggy waste station with bags, etc. even if there isn't a dog park. Also trash receptacles placed throughout. Another nice addition would be a neighborhood food pantry and little free library.
24	Security cameras would be comforting.
28	For public safety, it would be nice if there was a more open view and feeling to the park boundaries. I would not want to take away any old trees (water run-off), but maybe by removing invasive plants or trimming back limbs that are view obstructive.
31	Please we need swings!!!
36	Need space for dogs
41	I'd like to see more trees added, and maybe a garden where the upper basketball court is. And possibly replacing the hand-railed sides with more straightforward ADA-compliant ramps. That would work instead of having a non- and a pro-. Honestly, the playground is fine except for the pipes sticking out of the ground and the slope. If we could separate the different sections instead of having many different levels and instead just have two with clear distinctions, that would be nice. And maybe more benches. I also really hate the creek right now, and feel like it's a massive waste of space and an eye sore. Maybe cleaning that up and putting in walking trails and trees would be nice. I don't know, I just feel like it's a sad park right now that has so much potential.
47	Parking, easier access at entrance, security cameras or additional lighting, grassy play area for ball games etc, cleaning out some vegetation
50	I think general clean-up, removal of invasive species, and redoing basketball and playground areas would be great to see.
51	I would like to see the memorial for Lamont to stay and the basketball courts to be renovated and to also to stay as a part of the park.
52	I'd really like for the memorial to Lamont to be preserved.
53	I would like the memorial at the entrance to remain or become a permanent fixture.
54	The playground and basketball courts need to be updated.

ResponseID Response

55	I really do believe it's important to persevere not only this cherished neighborhood staple, but more importantly the memorial for Lamont should be preserved.
56	The community is changing so fast, please keep the park as a place kids can have fun on safe play structures and equipment and the young men can play basketball.
63	Please also contact [REDACTED]
65	An off leash dog park is #1 for me! I think at least one basketball court should remain and be improved, but 4 is excessive. I would use it occasionally if it was in good shape. A clean restroom would be a really nice addition too. It would make having a group and/or food event more realistic.
66	My family includes young children and a dog. We visit parks often. We enjoy splash pads and a space to host birthday parties. We would enjoy a safe environment to exercise and play. We are looking forward to the changes and so happy about this initiative.
69	I have questions about the creek restoration. Also with cleaning up kudzu & other invasive plants. Worry it is pointless if it is originating from another location.
71	Please strongly consider a fenced, off leash dog area. I would also like to see a splash playground for little ones. Having good lighting, regular clean-up days and making the park inviting.
73	We'd like a path from 3rd Avenue
74	[REDACTED]
77	Wish it had more lighting at night, I walk my dog by it at night and it feels unsafe.
79	Please put up some kind of designated parking that keeps people OFF sidewalks (use benches, rocks, signage)
80	Having basketball courts within walking distance was a major pull to me moving to the neighborhood.
82	For question #7, ADA compliance and universal design should not be a condition but a requirement. ADA standards and universal design benefit everyone, all ages and all abilities. Additionally, we hope the steering committee will take into account the preferences of longtime residents of the neighborhood and not simply the people who have the time and resources to respond to this survey. We look forward to hearing about what comes next!

ResponseID	Response
84	[REDACTED]
85	Need electrical power at shelter. No water fountains. No grill installations, but you can bring personal grill. Movie nights in open field, keeps community connected (social distance possible to enjoy). Lights & cameras for SAFETY if applicable. ADA access at side landing near second court.
87	Park used to have a water feature. Also would like to see restrooms and outdoor fitness equipment. [REDACTED]
89	Nice to have a mix of shady area and open lawn. Fix cracks on basketball courts.
93	Informational plaque that offers brief history of area would help define and memorialize the park.
95	Please do not get rid of both basketball courts. This is an amazing amenity that is becoming more scarce.
97	It should get bouncy house days where there's a bouncy house there so I can go there when it's bouncy house day.
98	Sorry I don't have more useful input for you...
101	I think a splash pad would be a great addition to the park.
103	All of the invasive need to be removed from the grounds and growing up trees. After invasive removal from trees, trees need to be dead-wooded and structurally pruned. Trees need to be planted to replace the two historic oaks removed in 2019. The County also needs to remove all invasives from the old Third Ave. roadbed that adjoins the southwest corner of the park. If that is not done, the invasives over there will quickly encroach back into the park.
104	The open field/lawn section towards the back of the park would be perfect for the fenced in dog section.
105	The open field/lawn section towards the back of the park would be perfect for the fenced in dog section.
106	Swings
107	[REDACTED]

ResponseID	Response
109	Cedar park is in a prime location to become a huge benefit for the neighborhood and I am so excited to hear that it is being tended to. Again just safety concerns (good lighting, etc) and access from the south would be huge! We will likely be frequent visitors if/when we can get to it from 3rd Ave.
110	The basketball courts have been used for years for pickup games on Sundays. I would hope this tradition is encouraged, not discouraged.
111	Tetherball pole is cheap but lots of fun I do think access [for those with mobility challenges] would be good Thank you for taking the lead. Improving Cedar Park will help our community gather more frequently and get to know one another. Access for neighbors on other side would really help! [REDACTED]
112	Tetherball pole is great fun [REDACTED]
114	However [the incline] is too steep currently for strollers/wagons
116	The park needs to be friendly to all ages. Often grandparents are the ones bringing kids to the parks. There should be plenty of green space with shaded areas. Planned events will bring people to the park.
119	We are new to the neighborhood and live directly beside Cedar Park. I think the play areas can be improved for all ages (including swings, climbing structures, larger slides, etc.) Would love to see basketball preserved and improved. Better landscaping and incorporating more natural areas and seating would be great. Adding a small parking area or street parking would make us more likely to use the park for gatherings such as birthday parties or meeting with family/friends. A restroom would be great (we have lived here less than a month and have seen a park guest relieve themselves in the woods between the park and our house). Finally, we love the trees that provide a buffer from our property and would hope that all neighbors can have something like that as well.

Appendix B

LIVE-POLLING DATA

APPENDIX B

What are your top considerations for a better Cedar Park? You may pick up to three. Please send your three answers separately.



Response options	Count	Percentage
Access and entrances	18	18%
Dedicated sports facilities	3	3%
Gathering space	2	2%
Maintenance and upkeep	11	11%
Nature, trees, and the creek	21	21%
Open space for free play	7	7%
Play space for children	13	13%
Safety	11	11%
Space for dog owners	13	13%

77% Engagement

99 Responses

In one or two words, what sights and sounds would you like to experience in Cedar Park? You may answer up to three times.



Responses

Dogs	basketball dribbling	Meat sizzling	basketball dribbling
Dogs	Meat sizzling	Tennis balls	Connecting-Bridge
basketball dribbling	Concerts	Woof	Creek
Grilling	Music		
Kids	Rustling-leaves	Happiness	Stream
Conversation			
Barking	Children	conversation	Trees
Peaceful	Children		
Neighborhood gatherings	Birds	Birds	Running water stream
Children	Dogs barking	Dogs-barking	ball-bouncing
Birds			
Water	Nature	Water	Water
Birds	Trees	Gathering	
Conversation	Water	Dogs	TREES
Children	Birds	Playing	
gatherings	Dogs	Water	Water
Water	Water	Dogs barking	
Happy people	Canyon trains	Swings	Playing children
Laughter			
Basketball-games	children	Children	Nature
Running-Water-Stream	wind in the trees	Playing dogs	birds
Trickling-water	Concerts-on-the-green	kids	Birds
Tennis balls			
Dogs	Barking	Children birds	Children-playing
Water feature			
Water	Nature	Greenspace	Birds
Birds	bees	Children	
Children-playing	Birds	Birds	Birdsong
Birds	Trees		
Children laughing			

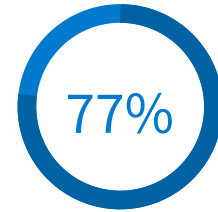
77% Engagement

92 Responses

September 15, 2020, Live-polling responses Public Meeting 1

In just a few words, what would you change about Cedar Park to help it better serve you? Each person may answer three times.

- Responses
- good quality playground workout station
 - Place to sit near playground for moms with babies and active kids
 - Dog Park No dog park Manage erosion Safety
 - Use of topo to create waterfall drainage feature
 - Walking paths and seating
 - Foot path from park to portion of Third that connects with Rockbridge.
 - Fenced dog run Yes to a Dog Park Plant Fruit Trees
 - better maintained basketball court Walking in serenity
 - More greenspace, less concrete Connectivity with bridges
 - More usable space Dog friendly space not as steep
 - Able to see and appreciate the creek Restore creek Dog Park Please
 - Flowers & Plants along a walking path Beauty Dog park
 - Safer fencing especially for young kids no dog park Better lighting
 - Safety Benches etc through green space to sit and enjoy
 - Used of topo to incorporate play feature. Reduce concrete
 - Needs a splash pad Remove invasive
 - More shade and peaceful places to sit
 - Remove invasives and plant natives. garden spaces
 - Fenced dog park Reduce kudzu No dog park Better lighting
 - More pavilion space Larger play areas/structures Less concrete
 - Restore creek, remove kudzu Dog park Better drainage
 - More trees & green space Workout Stations More green space
 - More trash cans Native plants
 - Better gathering areas for multiple gatherings at once
 - Safer and less closed off Landscaping Water Less concrete
 - Less concrete No dog park Parking Landscaping accessibility
 - Inviting to community somehow NO DOG PARK. Safety
 - The access and how far back into the property the grass area is. Too much concrete.
 - More landscaping Updated Basketball Court with Fence
 - Less concrete or more usable concrete (walking paths) Better access
 - Clear the plants Parking Grills Please Dog park Dog park
 - Good quality playground Aesthetics, beauty and the scent of flowers
 - Better communal areas Lighting Safety!!
 - Removal of invasive plants Better lighting
 - Entrance on south side of park Lightning Ada Reduce kudzu
 - Less concrete Lighting Accessibility Access Splash pad
 - Better lighting ADA Compliant Better access Ada



Engagement

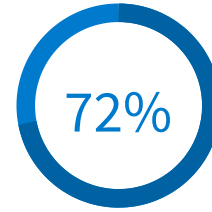
96

Responses

What else should we be thinking about when it comes to the design of Cedar Park?

Responses

- Better Accessibility
- Clean up kudzu & run down areas
- TENNIS COURTS
- Plaque that offers brief history of area.
- Music feature
- Entrance Archway with plants
- Woof woof we need a place
- Restore creek
- Little free library or food pantry
- Something references Toby grant
- Community Garden!!
- Dog park
- Wifi tower
- Dog friendly area
- DOG PARK PLEASE
- Benches for seating in open spaces, where people can walk to and sit.
- Add benches & walking paths
- Something referencing Muskogee Indian
- amphitheatre
- Doggy clean-up station
- Garden space
- Dog Park
- Neighborhood garden
- Mosquito control
- Build community and think attractational space for parties and concerts
- Creek
- Quality playground equipment for all age children
- Multiple small gathering areas
- Tennis Courts
- Tennis courts
- Plenty of trash and recycling receptacles
- Beautiful pollinator plants
- Mid century modern feel to match buildings in area
- Exercise stations on walking path
- Parking
- Benches and paths, with native gardens
- Access from Creighton
- Good mix of shade and sun
- Parking
- Overlook!!
- inclusiveness
- Keep natural areas
- DOG PARK
- Open field
- Restrooms
- Easy access from all sides
- Native plants
- Walking paths
- Parking
- No Dog Park!!!!
- Loop walking trail
- Maintenance
- Easy walking paths and walkways
- Walking paths
- Think diverse community
- Renovate basketball courts.
- Restroom
- DOG PARK!!!!
- Multiple areas for different uses
- No dog park
- Splash pad
- Aesthetic beauty
- Basketball courts
- Dog park
- Safety
- Think community
- Better Entrance
- Bathrooms
- Longevity and self sustaining
- Dog park
- Dog park
- maintain/keep basketball courts
- Inclusiveness
- Walking paths with plenty of shade
- safety
- Fenced and updated basketball court
- Easy access
- Maintain basketball courts
- better playground
- Splash pad
- Safety
- Running path
- workout area



Engagement

99

Responses

- Preserve memorial for our neighbor Lamont
- Water features
- Access
- Tennis Courts
- Natural beauty
- Splash pad or water feature
- Maintain basketball courts
- open play area
- Keep-the-Water-Pipe-Structure.
- Large-Open-Use-Field
- Accessibility for bikes/strollers/wheelchairs
- Parking
- Pollinator and native plants to replace the non-natives.
- Walking paths/sidewalks that loop
- Keep basketball courts
- Water feature for kids to play in! So needed in these hot Atlanta summers.

October 13, 2020 Live-polling responses Public Meeting 2

Let us know who's here today! (you may respond twice)

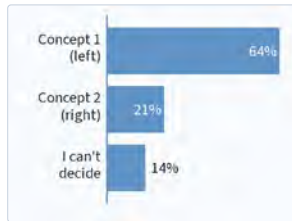


Response options	Count	Percentage
Grandparent	1	4%
Parent of young children	3	13%
Care-giver	0	0%
Dog-owner	4	17%
Tree-hugger	3	13%
Nature enthusiast	7	29%
Walker	0	0%
Basketball player	1	4%
Tennis player	0	0%
Grill-master	2	8%
Newer resident	1	4%
Born and raised in Scottsdale	0	0%
County staff	1	4%
Lived in the neighborhood for over 20 years	1	4%

30%
Engagement

24
Responses

In general, which plan to do you prefer?



Response options

Concept 1 (left)

Concept 2 (right)

I can't decide

Count Percentage

9 64%

3 21%

2 14%



Engagement

14

Responses

In one or two words, is there anything we missed that you wish we had included in one of the plans? (you may answer up to twice)



Responses

- No water features, wasteful. Less pavilions as trash could become a concern.
- Exercise Stations Creek Path Love the walking trails
- Exercise-Equipment Path Restroom Farm Exercise
- Exercise-equipment Restroom Splashpark Awesome-plans!
- Terraced-steps Third-ave-access Water feature Splashpark
- overlook-on-path-@-Creek Exercise equipment Access-to-third
- Water feature Overlooks on the path looking over the creek.
- I like One overall, but want the more open field from Two. A A



Engagement

26

Responses

Note: No live polls were conducted during the final public meeting on November 18, 2020. All feedback was received via an online survey, see Appendix D for details.

Appendix C

PRELIMINARY PLAN DATA

APPENDIX C

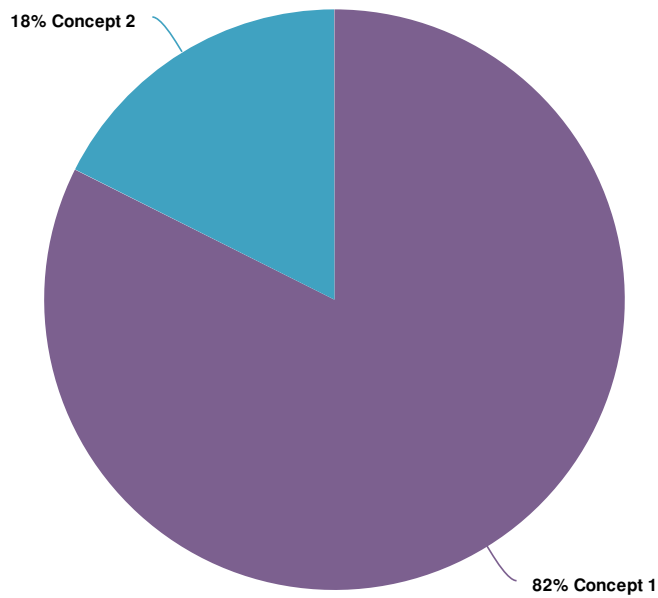
Report for Cedar Park Preliminary Plan Preferences



Response Counts

Completion Rate:	100%		
Complete			34

Totals: 34

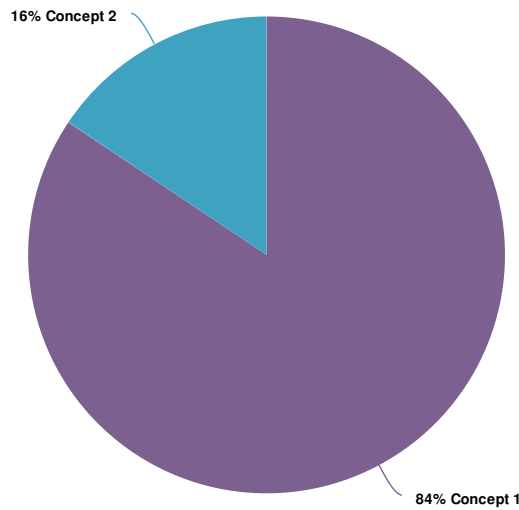
1. Overall, which concept do you prefer?



Value		Percent	Responses
Concept 1		82.4%	28
Concept 2		17.6%	6

Totals: 34

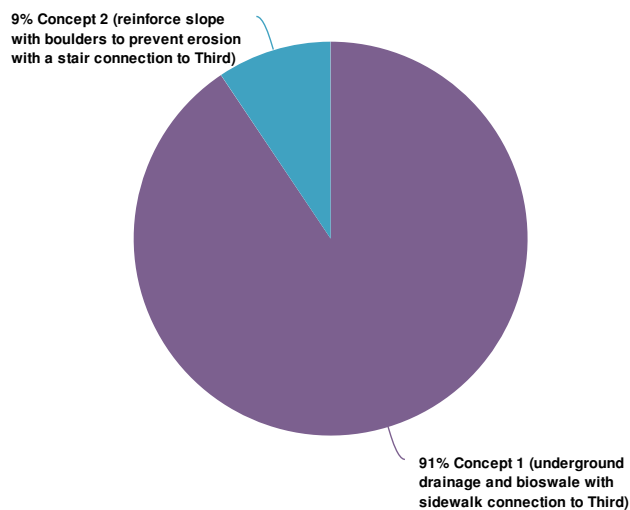
2. Which entrance configuration do you prefer? (select image below)



Value	Percent	Responses
Concept 1	84.4%	27
Concept 2	15.6%	5

Totals: 32

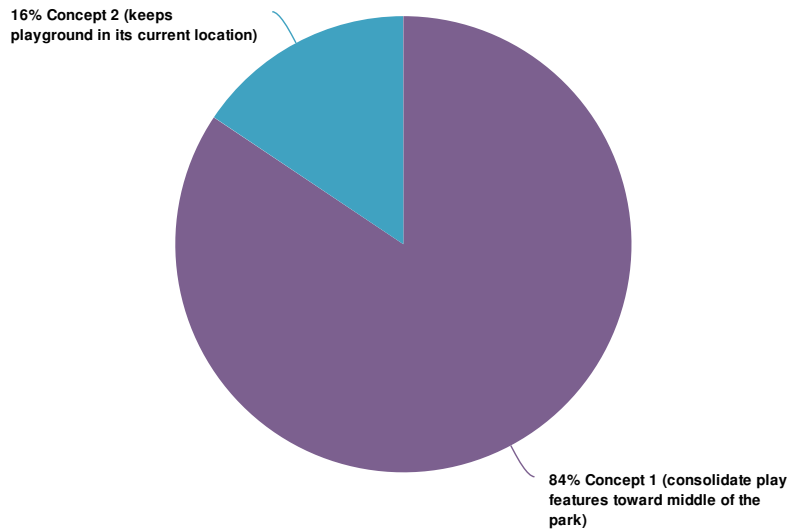
3. Both plans call for restoring the basketball courts, but they make different recommendations for how to deal with the erosion that washes soil onto the courts (underground drainage vs reinforcing slope with boulders) and different entrances from Third Ave (stairs vs sidewalk). Which option do you prefer? (select image below)



Value	Percent	Responses
Concept 1 (underground drainage and bioswale with sidewalk connection to Third)	90.6%	29
Concept 2 (reinforce slope with boulders to prevent erosion with a stair connection to Third)	9.4%	3

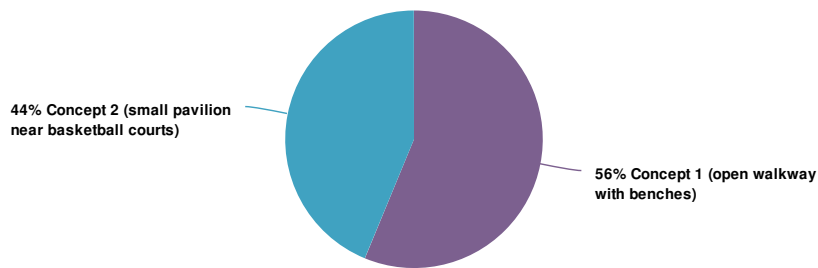
Totals: 32

4. Both plans update the playground equipment, but the playground is located in different areas. Which playground arrangement do you prefer? (select image below)



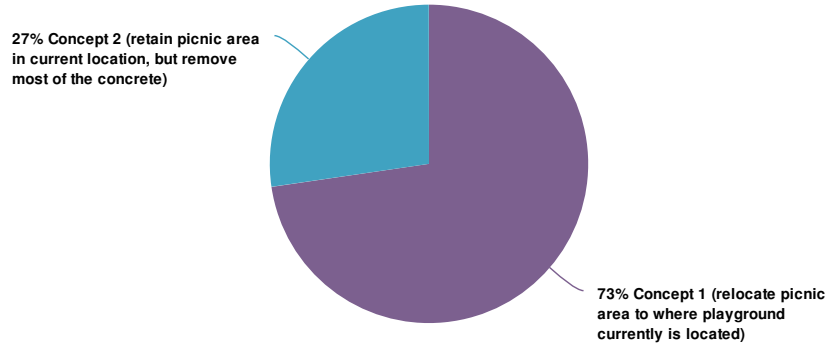
Value	Percent	Responses
Concept 1 (consolidate play features toward middle of the park)	84.4%	27
Concept 2 (keeps playground in its current location)	15.6%	5
Totals: 32		

5. What kind of overlook should be offered near the main entrance of the park? (select image below)



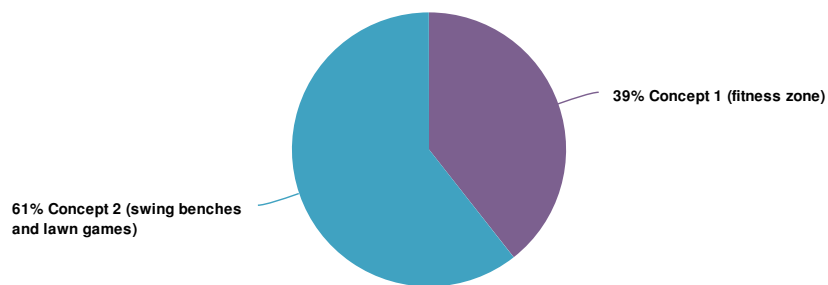
Value	Percent	Responses
Concept 1 (open walkway with benches)	56.3%	18
Concept 2 (small pavilion near basketball courts)	43.8%	14
Totals: 32		

6. Both plans include a picnic area with a pavilion, tables, and a grill.
Which picnic area option do you prefer? (select image below)



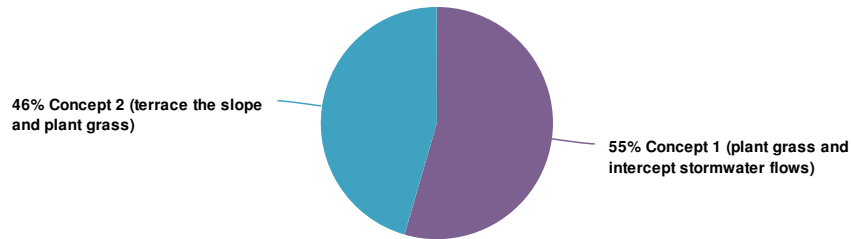
Value	Percent	Responses
Concept 1 (relocate picnic area to where playground currently is located)	72.7%	24
Concept 2 (retain picnic area in current location, but remove most of the concrete)	27.3%	9
Totals: 33		

7. Both plans recommend a place for adults to supervise children playing. Which do you prefer? (select image below)



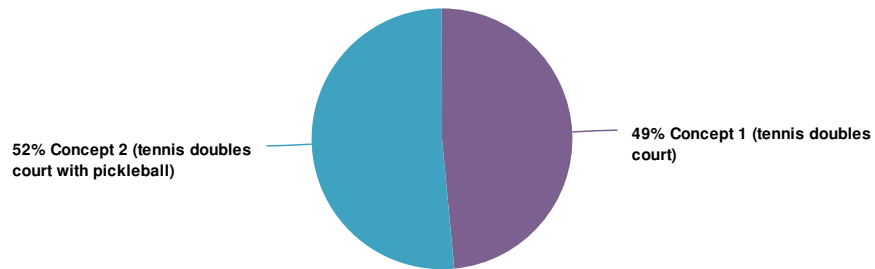
Value	Percent	Responses
Concept 1 (fitness zone)	39.4%	13
Concept 2 (swing benches and lawn games)	60.6%	20
Totals: 33		

8. Both plans address erosion on the steep hill in the park. Which method do you prefer? (select image below)



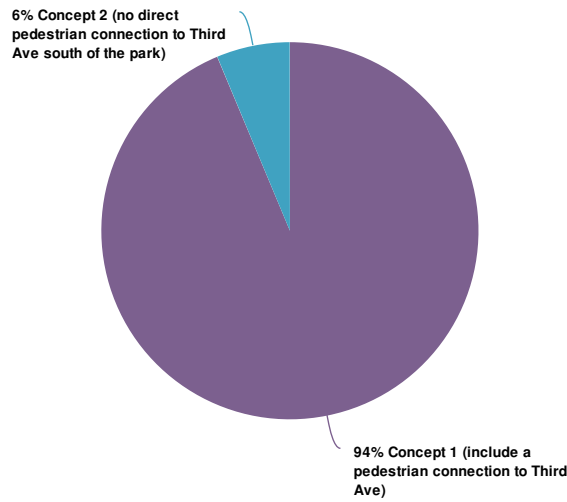
Value	Percent	Responses
Concept 1 (plant grass and intercept stormwater flows)	54.5%	18
Concept 2 (terrace the slope and plant grass)	45.5%	15
Totals: 33		

9. Both plans call for a tennis court to be added to the south part of the park. Which striping option do you prefer? (select image below)



Value	Percent	Responses
Concept 1 (tennis doubles court)	48.5%	16
Concept 2 (tennis doubles court with pickleball)	51.5%	17
Totals: 33		

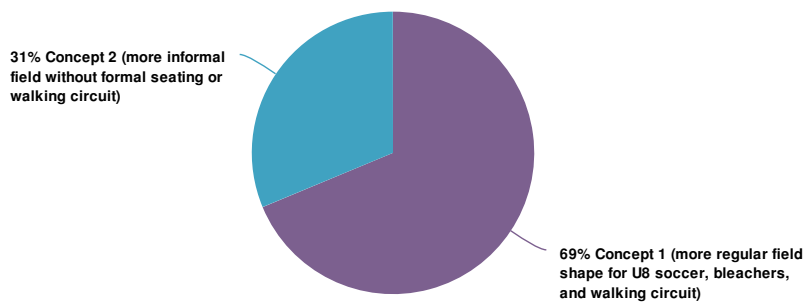
10. Both plans include a park entrance for Creighton Street, but only one proposes a direct connection for Third Avenue south of the park. Which option do you prefer?



Value	Percent	Responses
Concept 1 (include a pedestrian connection to Third Ave)	93.8%	30
Concept 2 (no direct pedestrian connection to Third Ave south of the park)	6.3%	2

Totals: 32

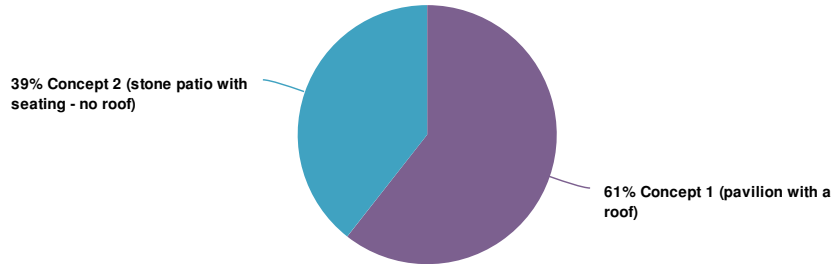
11. Both plans retain the open grassy field, but one has more walking paths and includes seating arranged for a U8 soccer field. Which do you prefer? (select image below)



Value	Percent	Responses
Concept 1 (more regular field shape for U8 soccer, bleachers, and walking circuit)	68.8%	22
Concept 2 (more informal field without formal seating or walking circuit)	31.3%	10

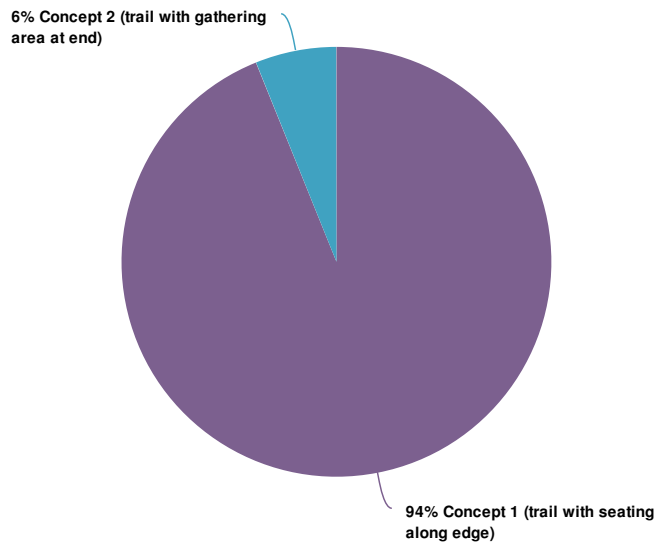
Totals: 32

12. Both plans include a place in the grassy area to sit. Which do you prefer? (select image below)



Value	Percent	Responses
Concept 1 (pavilion with a roof)	60.6%	20
Concept 2 (stone patio with seating - no roof)	39.4%	13
Totals: 33		

13. Both plans recommend eradication of the invasive plants, saving large existing trees, planting new trees, and creating walking paths. Which do you prefer? (select image below)



Value	Percent	Responses
Concept 1 (trail with seating along edge)	93.9%	31
Concept 2 (trail with gathering area at end)	6.1%	2
Totals: 33		

14. Is there anything you would like to add? Feel free to expand on one of your answers above, or tell us about something we didn't ask about.



Response

Do not really care about benches around field but definitely want the extended walking paths. Will add so much value to the park!

These are both lovely plans. The nature paths are awesome, I can't wait to walk along them. If possible could there be multiple smaller grills instead of one large grill? Then if one is in use by a family, a different family could use a separate one. Also could the watering fountains include watering stations for dogs, and could there be trash cans with bags for dog poop scattered throughout the park?

No pickle ball. The sound made when the ball strikes the paddle is annoyingly loud and grating, and the sound can be heard from very far away. Not fair to neighbors or others trying to enjoy the park. Basketball has nothing on pickle ball for noise pollution. // Make sure invasives are removed from trees, not just ground. Trees need to be structurally pruned once invasives removed from them. // Keep the field as open play as in Concept 2. Concept 2 still allows for pick-up games, but less structured and relaxing. // Don't pave trail near stream. Keep as flat dirt and as close to natural feel as possible. // Thanks!!!

Continued on the following page

Response

I love what you all are doing! Thank you for encouraging neighborhood input. In my opinion the most important aspects are accessibility and safety. I love the idea of ADA accessible paths wherever possible and play equipment that's made for kids of all ability levels. I also love the idea of a separate little kids play space! Still wish the splash pad idea had come through but I'm happy with these concepts regardless. Thank you! Can't wait to bring my daughter here no matter which plan you go with.

This is amazing - thank you so much! Question #8 - tough to answer without knowing the pros and cons of each. Would love to incorporate the climbing wall from concept #2 into concept #1.

Will there be cameras linked to Dekalb PD? Would help remove the stigma this park has carried.

I like concept 2 of the grassy field, but prefer the walking trail on concept 1. Thanks!

Think it would be lovely to have more trees in the north end of the park! Love your ideas! Thank you

Thank you!

should be able to add pickle ball lines to tennis court in either concept.

You guys did an amazing job! This is so exciting :D -Would love to eliminate exercise equipment area in concept one to extend younger age playground area so that it can accommodate as much equipment as the playground for older children -Would love to see the rock climbing wall in concept 2 added to concept 1 and potentially another slide -Recommend more trash receptacles in key areas (especially grilling areas) -Recommend a second doggy station in lawn area -Add water (possibly fountain or pond) feature to woodland garden area -A neighborhood Little Free Library would be an amazing addition to the front entry

I am glad you included pet stations w/bags & trashcans. Hoping we can keep it clean. I believe 2-5yo playground would be a great addition, along with the rockwall. The rubberized surfaces will be a game changer. My favorite is the walking paths, bench swings and benches throughout the park. I think a smaller pavilion up would be better since we do not have a lot of parking. We would prefer ppl have really large groups at their own homes.

Please replace old oak trees that were taken down.

Response

I love the balance of play areas with the nature in both of the designs. I'm wondering about Cedar St. access for the families with baby/child strollers. It may be too steep to incorporate a ramp, but I cannot envision parents with strollers going down, then back up, the steep incline on Third Ave. to access the play areas. If I missed this in the design, my apologies. Great job!

I love the terraced slope with pavilion at bottom on lawn that leads down to the open field in concept 2! Keeping that pavilion central with good flow to the field would be much more enjoyable for me than a playground in that location. I prefer the walking trails with lower third ave entrance, field pavilion, and the open overlook in concept 1. That would be my ideal hybrid :) Thank you!

Wonderful interactive site that allows for a lot more choices than I expected! Thank you!

Please be considerate of and maintain tree canopy! Scottsdale tree canopy is being decimated, including those large trees taken from Cedar Park recently. Also, the creek needs TLC! Please maintain stream buffers! The connection to third avenue south is key because this will be important path to elementary school!! Finally, there really needs to be a 4-way stop at the intersection of Cedar and Third Avenue. I see people almost get hit there nearly everyday. It is a very dangerous intersection to navigate as a pedestrian and there are MARTA and School Bus stops there in addition to the entrance to the Park.

Thank you!

Environmentally friendly playground equipment is important

I have really enjoyed being a part of this process. It feels more like a part of my neighborhood now, and I hope that will be true for everyone else too!

Appendix D

PRIORITIES DATA

Report for Cedar Park Vision Plan Community Priorities

Response Counts



Totals: 37

1. Please drag and drop the projects identified in the vision plan in order of priority to you, with the highest-priority project at the top of the list.

Item	Overall Rank	Rank Distribution	Score	No. of Rankings
C. Community pavilion area, two playgrounds, and overlook	1		206	36
F. Invasive removal and streamside trails	2		196	35
B. Cedar Street entrance	3		188	35
D. Open lawn and field trails	4		179	35
A. Basketball Court replacement	5		160	35
E. Creighton Ave entrance	6		146	36
G. Racquet sports court	7		105	35
H. ADA-compliant parking lot	8		95	35



2. Is there anything else you would like us to know?

Response

I am very thrilled we will have trash cans throughout & proper places for dog poop to go. I do worry about trash being collected & hope ppl utilize the cans as unfortunately lots of trash on our streets. We are so grateful & appreciative of your hard work. Thank You!!

It was extremely disappointing that no consideration was given to a fenced dog park for those living in the community. Once again those of us with pets will be banned from using the open green space, because we are only making room for families with children to enjoy the park. We are also adding an additional court, when one already exists for basketball. That space could have been put to better use to allow our families with pets to enjoy the park as well. It is exceedingly important for dogs to have a area where they can be unleashed, and our families enjoy the park as well.

Great job on the visioning process!

I would like addaptive swings for kids with special needs.

Lighting along trails would be nice.

There really needs to be a four way stop for traffic at intersection of Cedar and Third. Even with the speed bumps that are supposed to be installed on Cedar, that intersection is dangerous and scary for accessing the park, but also dangerous for the school bus stops and MARTA stops at that intersection.

I was hoping for a water feature for children. I have young kids. We have to travel outside of our neighborhood for this during the summer months. The invasive plants must go!

Opening a trail to Third should be included with Creighton Ave. entrance. Thanks.

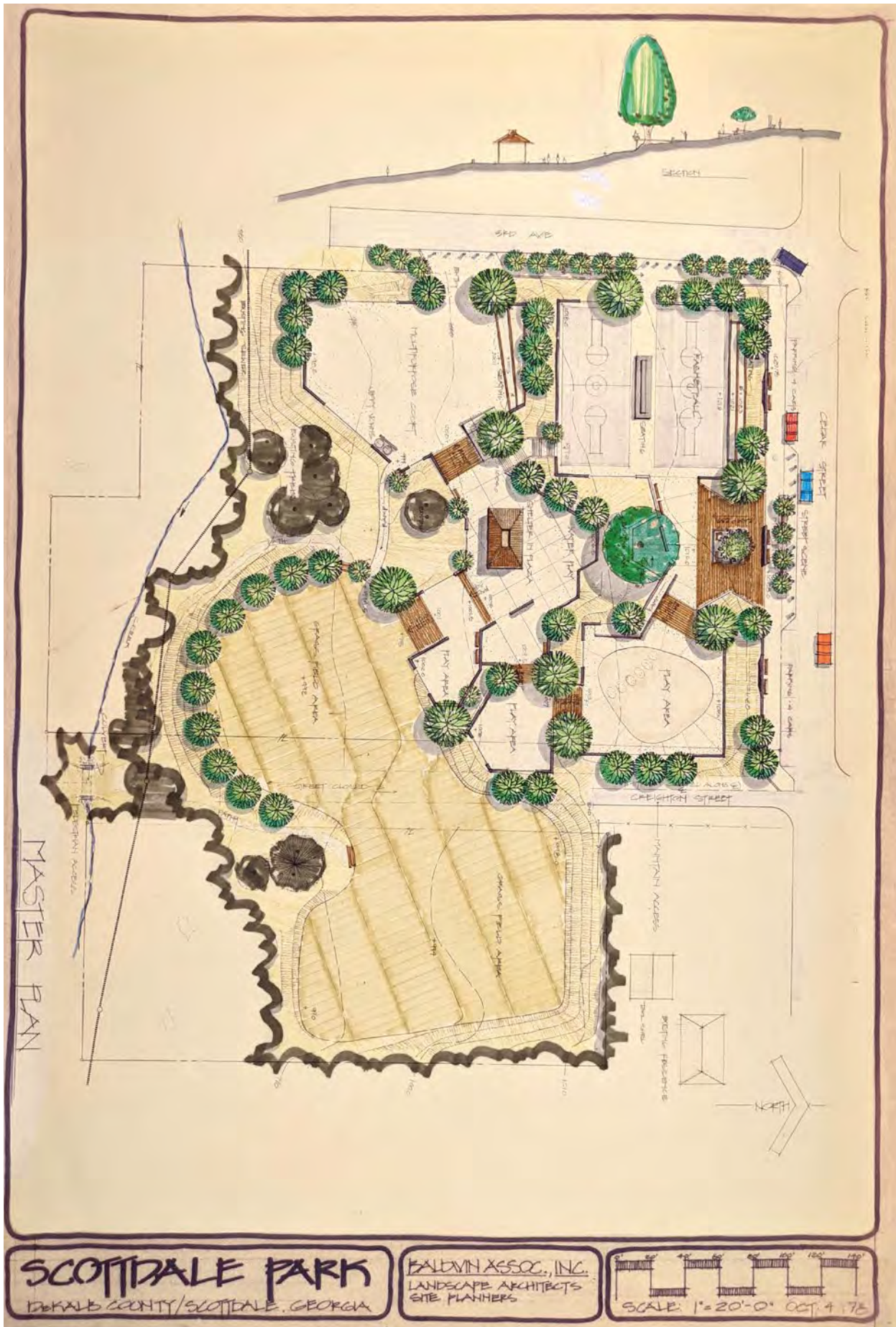
Bummed that a dog park is not part of the design.

It is most important to have features that benefit many, rather than few.

I would prioritize the clean up around and trails leading to the park from all the streets neighboring the park. This will allow for all neighbors to have easier access to the park.

Well lighted trails for safety and appearance.

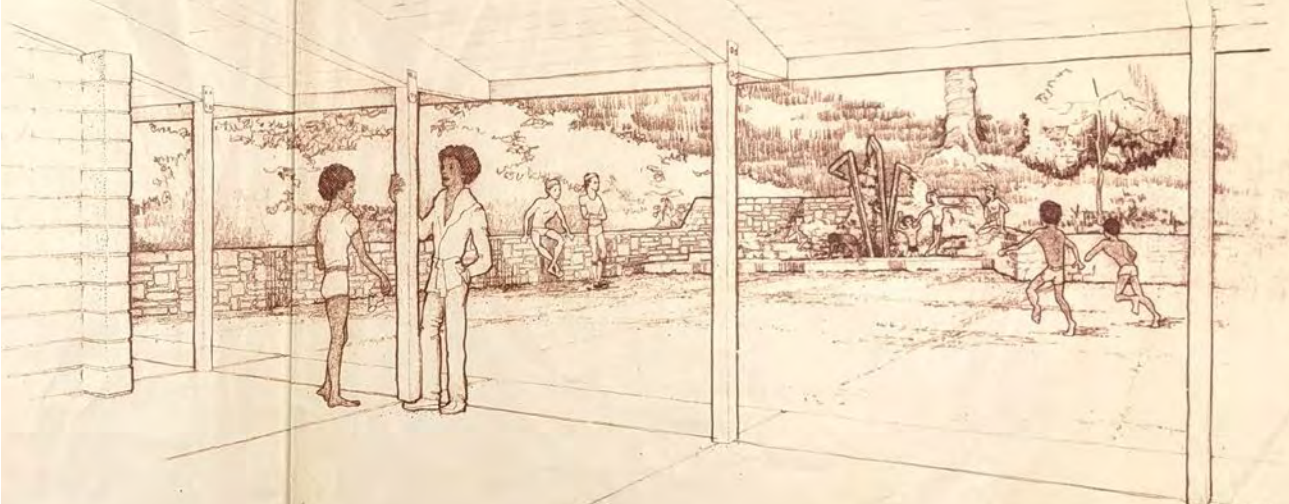
I appreciate this process. Thank you all.



Appendix E

1981 AS-BUILT PLANS

APPENDIX E



Note: A copy of the original plans is housed at the Atlanta History Center, from the collection: Baldwin and Associates, Inc. (Atlanta)

CEDAR PARK / SCOTTDAL PARK

DeKalb County, Georgia

SHEET INDEX

sheet	reference
1	Existing topography
2	Staking plan
3	Site Development plan; Electrical and Water plan
4	Grading and drainage
5	Drainage plan and profiles
6	Detail sheet A
7	Detail sheet B
8	Planting plan
A1	Alternate work

PREPARED BY BALDWIN ASSOCIATES, INC.

P.O. BOX 4007
DORAVILLE, GEORGIA
(404) 491-4002

March 5, 1979

Rev: 6-29-81 CEDAR PARK (AS BUILT 1-13-91)

BM, Top of M.H. Elev. 1031.23

Cedar Street

REMOVE EXISTING SIDEWALK AND DE-SIT PORTION AND RELOCATE PORTION OF EXISTING GRANITE CURB. THIS WORK IS TO BE APPROVED & SCHEDULED WITH DEKALB CO. DEVELOPMENT DEPT. POWER POLES ARE TO REMAIN AS SHOWN CEDAR ST. 2' SIDEWALK.

FENCE TO REMAIN

NORTH

Clarkston

SITE

Avondale Estates

3rd Ave.

Location Map

1. COUNTRY AVE. HAS BEEN CLOSED BY DEKALB COUNTY. CONTACT DEKALB COUNTY TO OBTAIN PERMITS TO CROSS COUNTRY AVE. TO THE PROPERTY. CONTACT DEKALB COUNTY TO OBTAIN PERMITS TO CROSS COUNTRY AVE. TO THE PROPERTY.

2. THE PROPERTY IS LOCATED IN DEKALB COUNTY, GEORGIA.

3. THE PROPERTY IS LOCATED IN DEKALB COUNTY, GEORGIA.

4. THE PROPERTY IS LOCATED IN DEKALB COUNTY, GEORGIA.

5. THE PROPERTY IS LOCATED IN DEKALB COUNTY, GEORGIA.

6. THE PROPERTY IS LOCATED IN DEKALB COUNTY, GEORGIA.

7. THE PROPERTY IS LOCATED IN DEKALB COUNTY, GEORGIA.

8. THE PROPERTY IS LOCATED IN DEKALB COUNTY, GEORGIA.

9. THE PROPERTY IS LOCATED IN DEKALB COUNTY, GEORGIA.

10. THE PROPERTY IS LOCATED IN DEKALB COUNTY, GEORGIA.

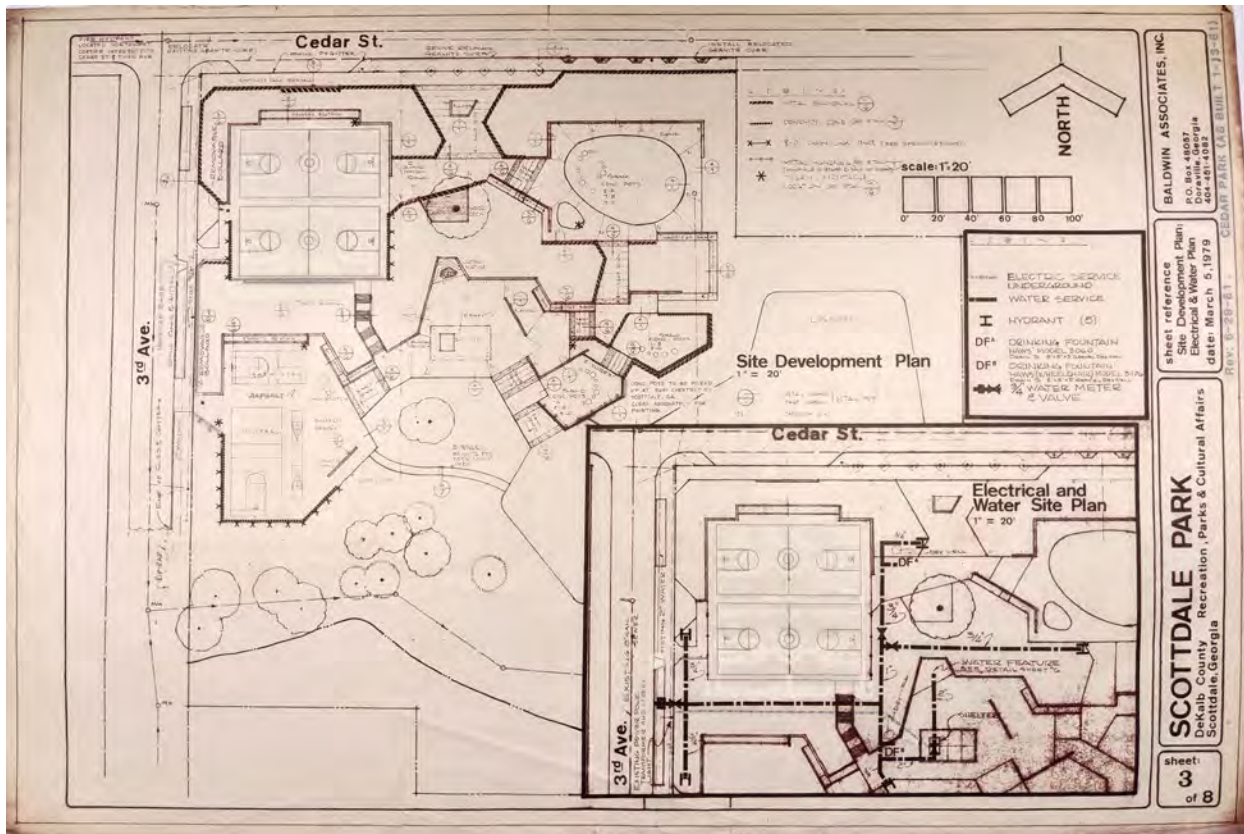
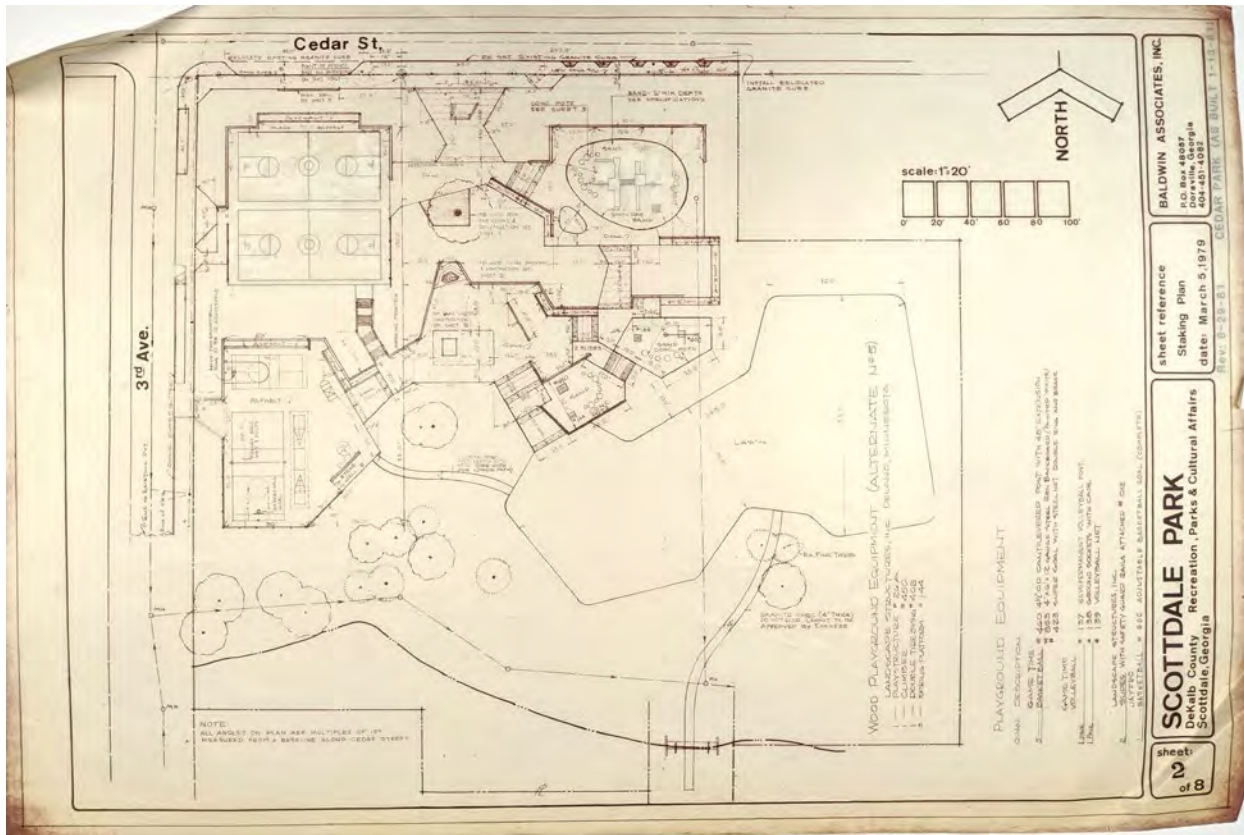
BALDWIN ASSOCIATES, INC.
P.O. Box 4007
Doraville, Georgia
404-491-4002

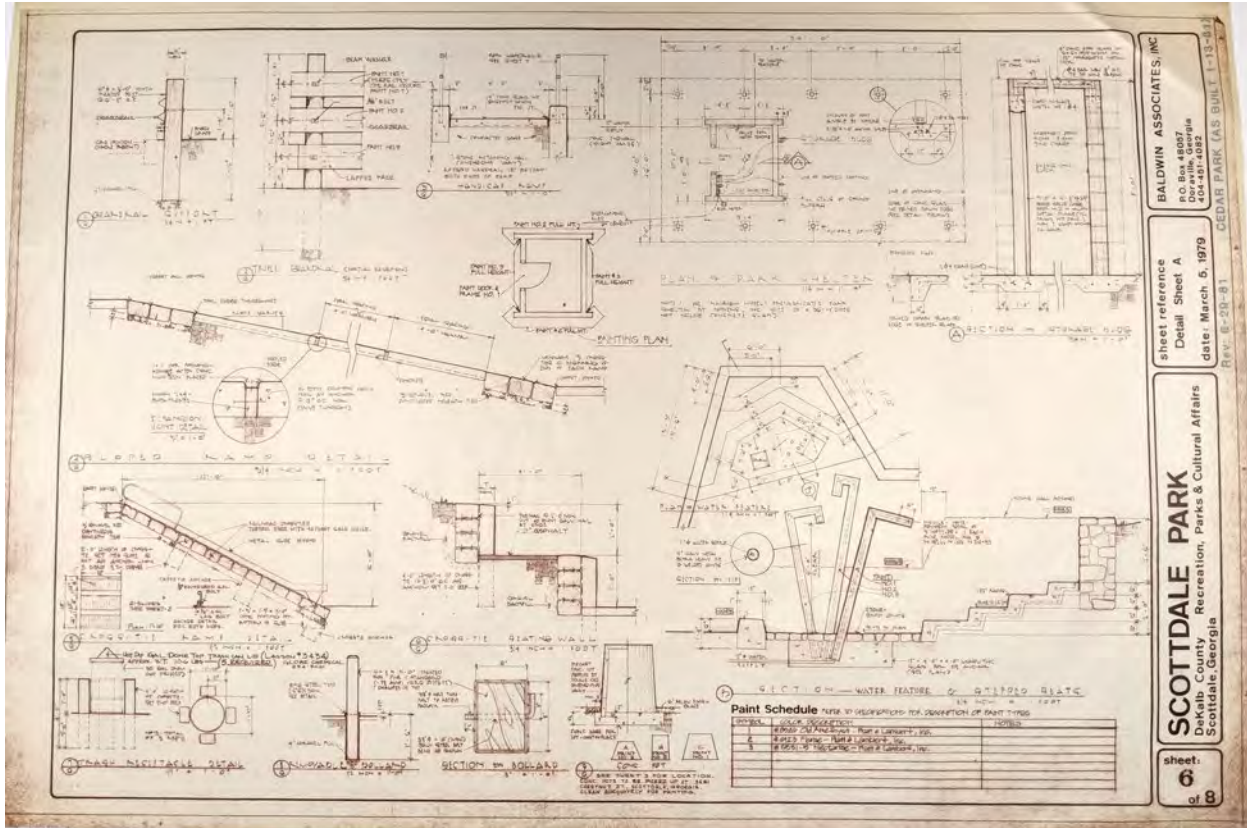
sheet reference
Existing topography
date: March 5, 1979

SCOTTDAL PARK
DeKalb County
Recreation, Parks & Cultural Affairs
Scottsdale, Georgia

sheet:
1
of 8

SCALE: 1" = 20'



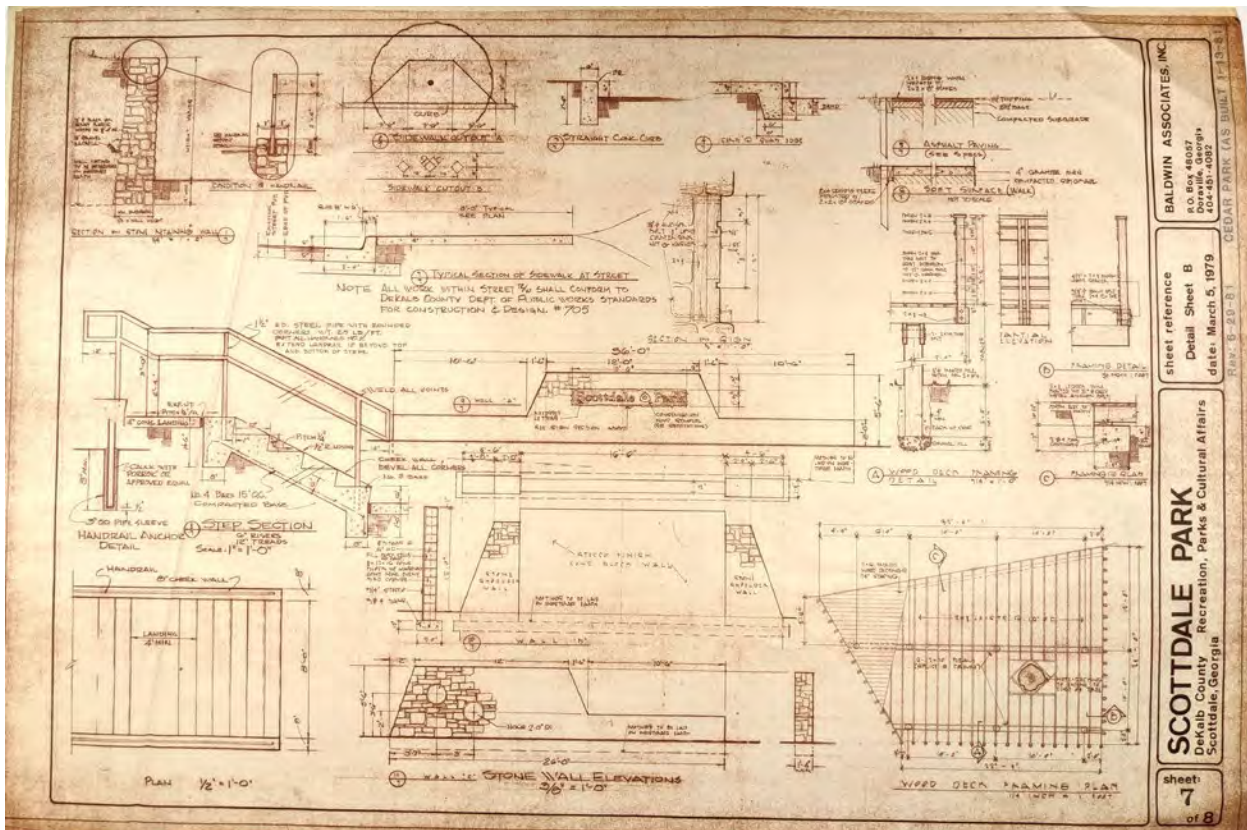


BALDWIN ASSOCIATES, INC.
 P.O. Box 4887
 Decatur, Georgia 30033
 404-481-4887

sheet reference
 Detail Sheet A
 date: March 5, 1979
 REV. B-208-91

SCOTTDALE PARK
 Dekalb County Recreation, Parks & Cultural Affairs
 Scottsdale, Georgia

sheet:
6
 of 8

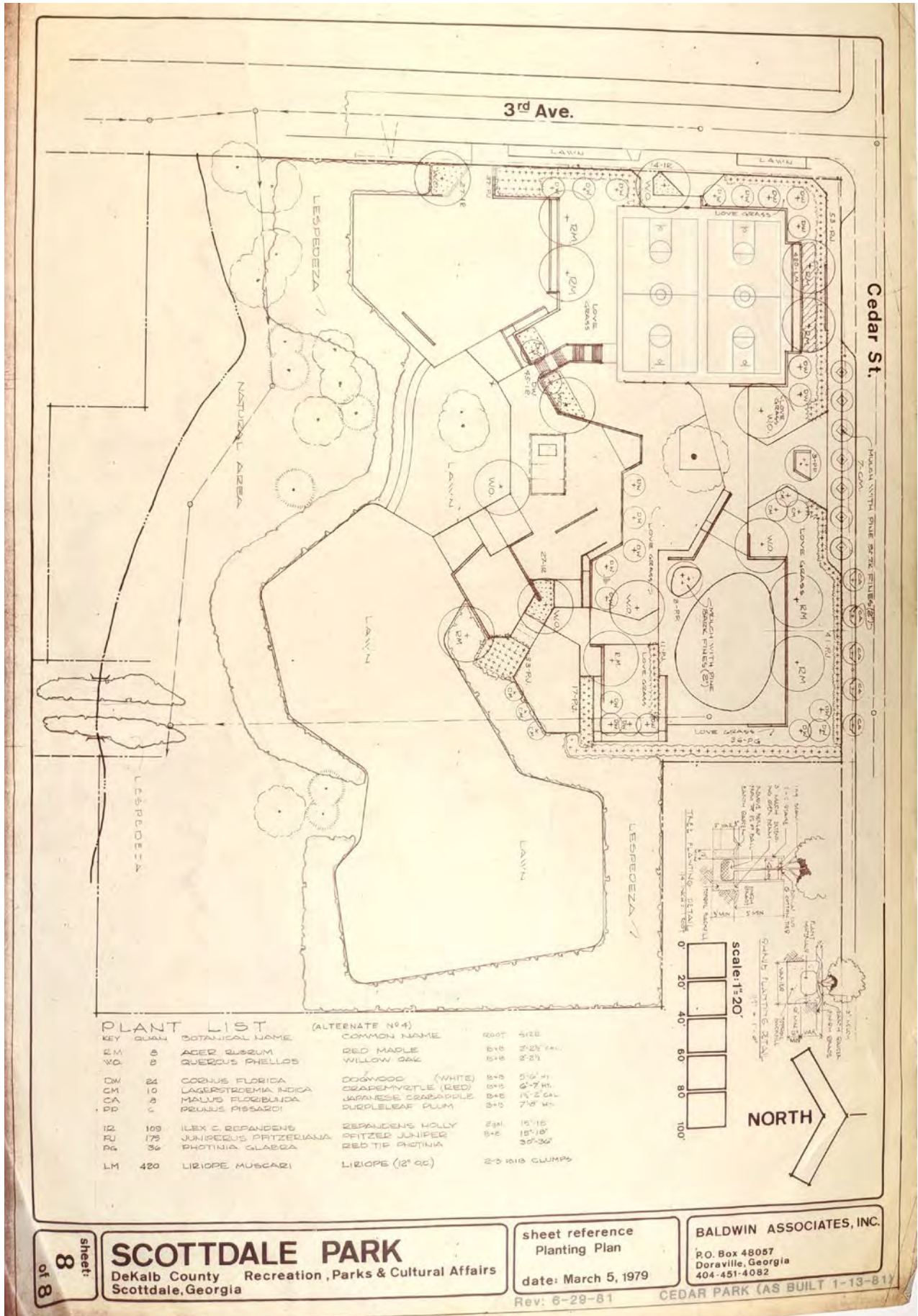


BALDWIN ASSOCIATES, INC.
 P.O. Box 4887
 Decatur, Georgia 30033
 404-481-4887

sheet reference
 Detail Sheet B
 date: March 5, 1979
 REV. B-208-91

SCOTTDALE PARK
 Dekalb County Recreation, Parks & Cultural Affairs
 Scottsdale, Georgia

sheet:
7
 of 8



sheet: **8**
of 8

SCOTSDALE PARK
DeKalb County Recreation, Parks & Cultural Affairs
Scottsdale, Georgia

sheet reference
Planting Plan
date: March 5, 1979

BALDWIN ASSOCIATES, INC.
P.O. Box 48057
Doraville, Georgia
404-451-4082

This document and materials created for the 2020 Cedar Park visioning process are available online at <https://parkpride.org/we-can-help/park-visioning/>

These materials will also be archived at the Kenan Research Center, Atlanta History Center. Appointments can be made at 404.814.4040 or by emailing reference@atlantahistorycenter.com





P. O. 4936
Atlanta, GA 30302
parkpride.org